

FREEHOLD CITY TOWNS - 1 CAR GARAGE / 2 CAR PARKING TOTAL



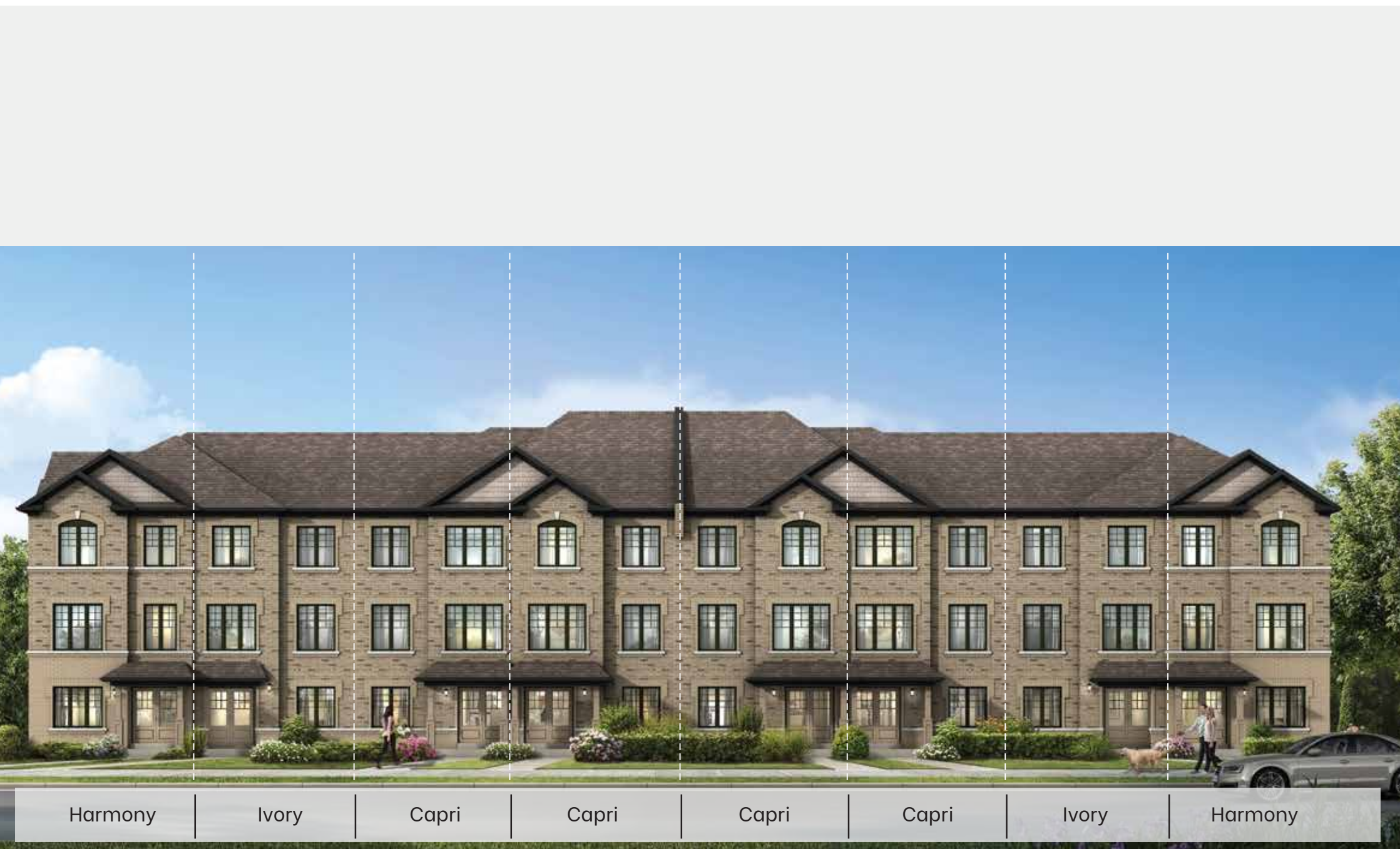
Ivory

elev b • 1720 sq. ft.
elev c • 1720 sq. ft.

fieldgatehomes.com



FREEHOLD CITY TOWNS - 1 CAR GARAGE / 2 CAR PARKING TOTAL



Ivory

elev a • 1720 sq. ft.

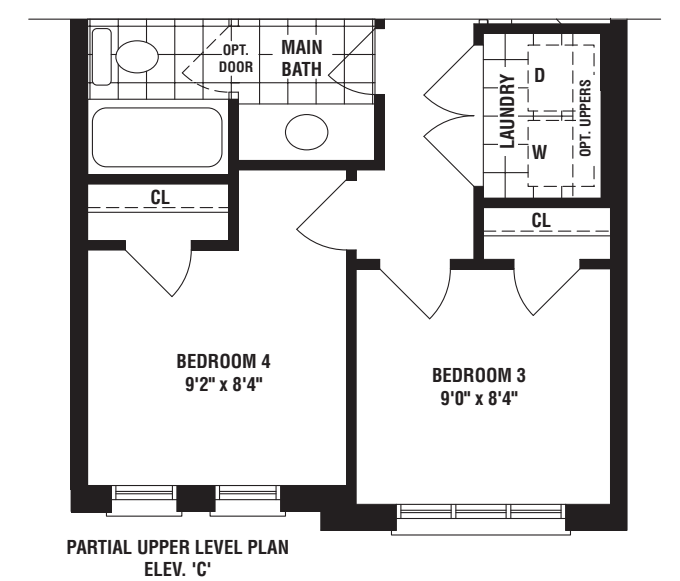
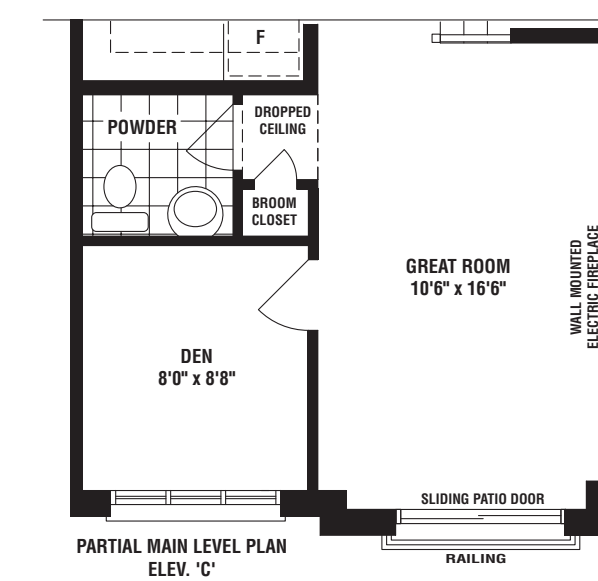
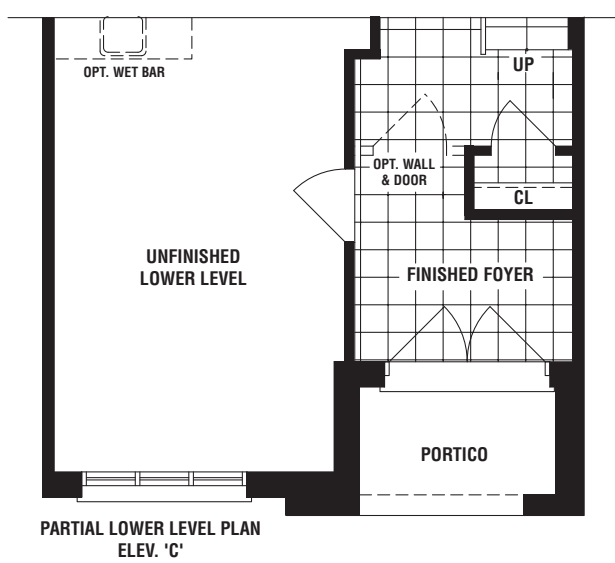
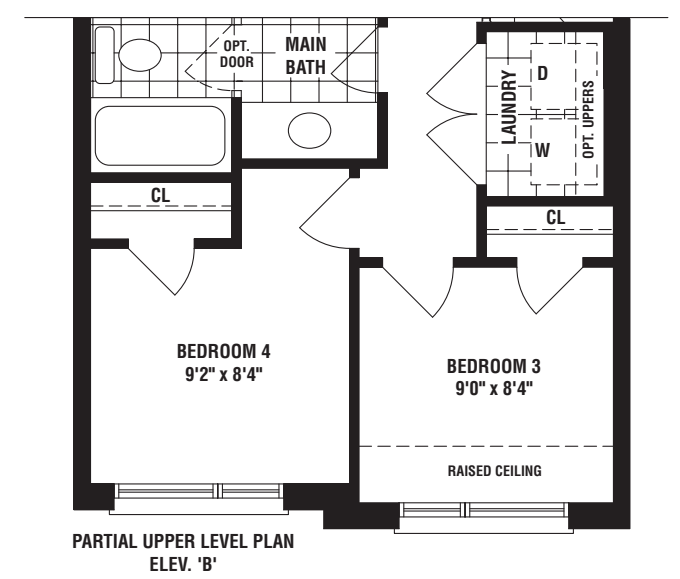
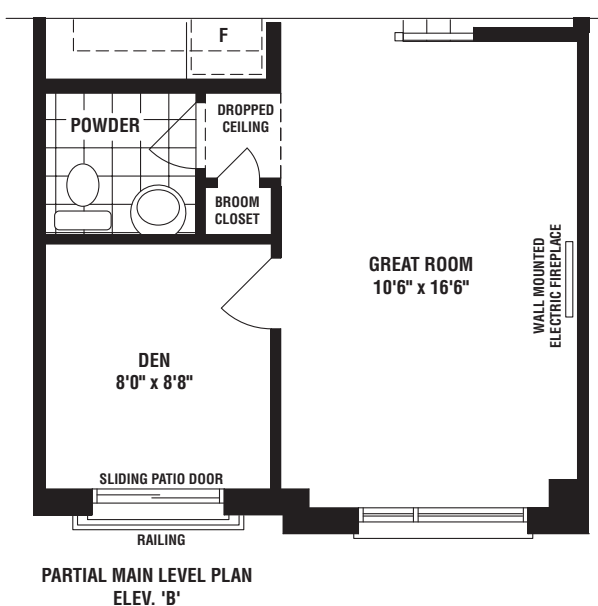
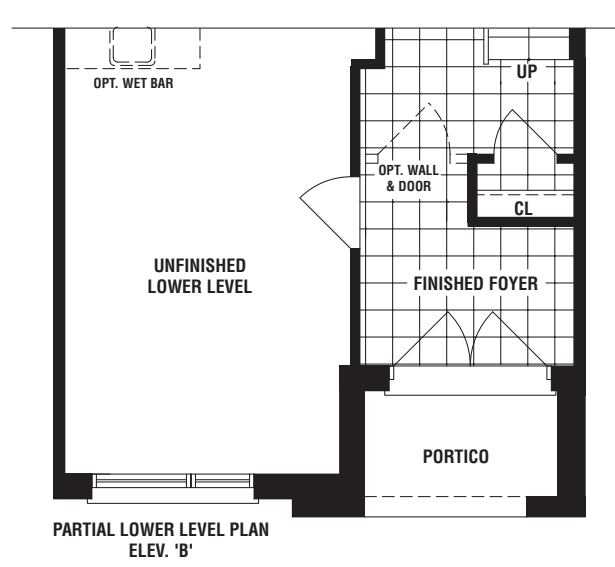
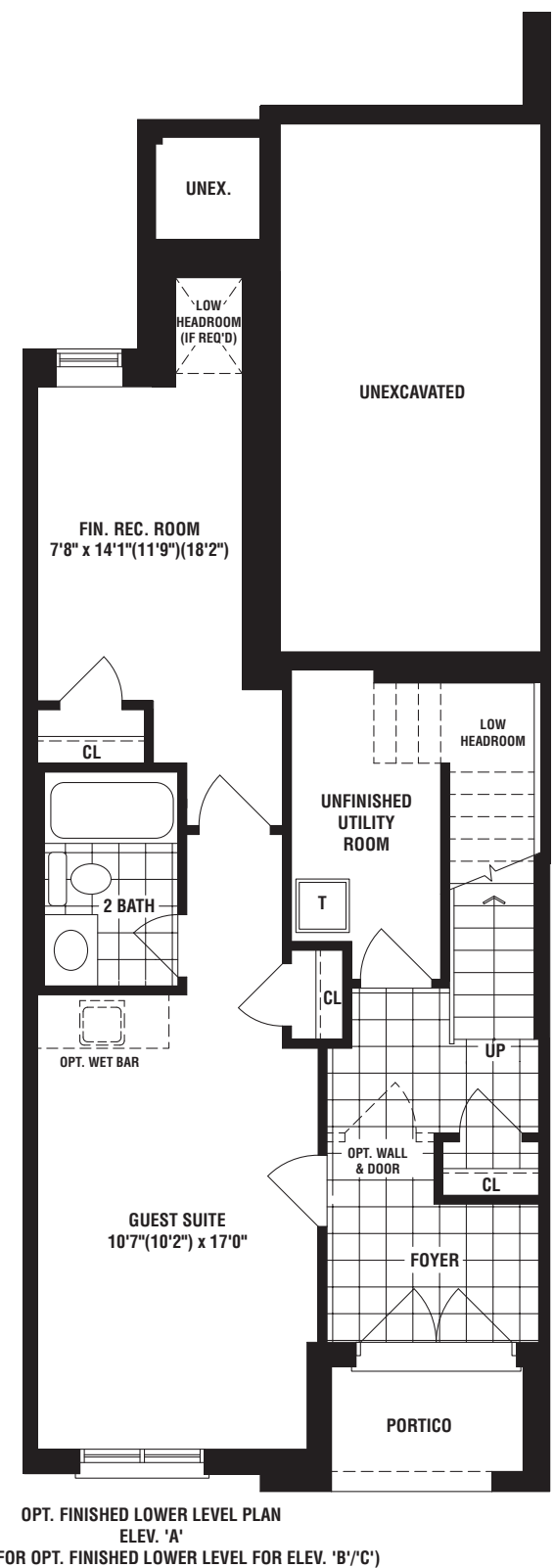
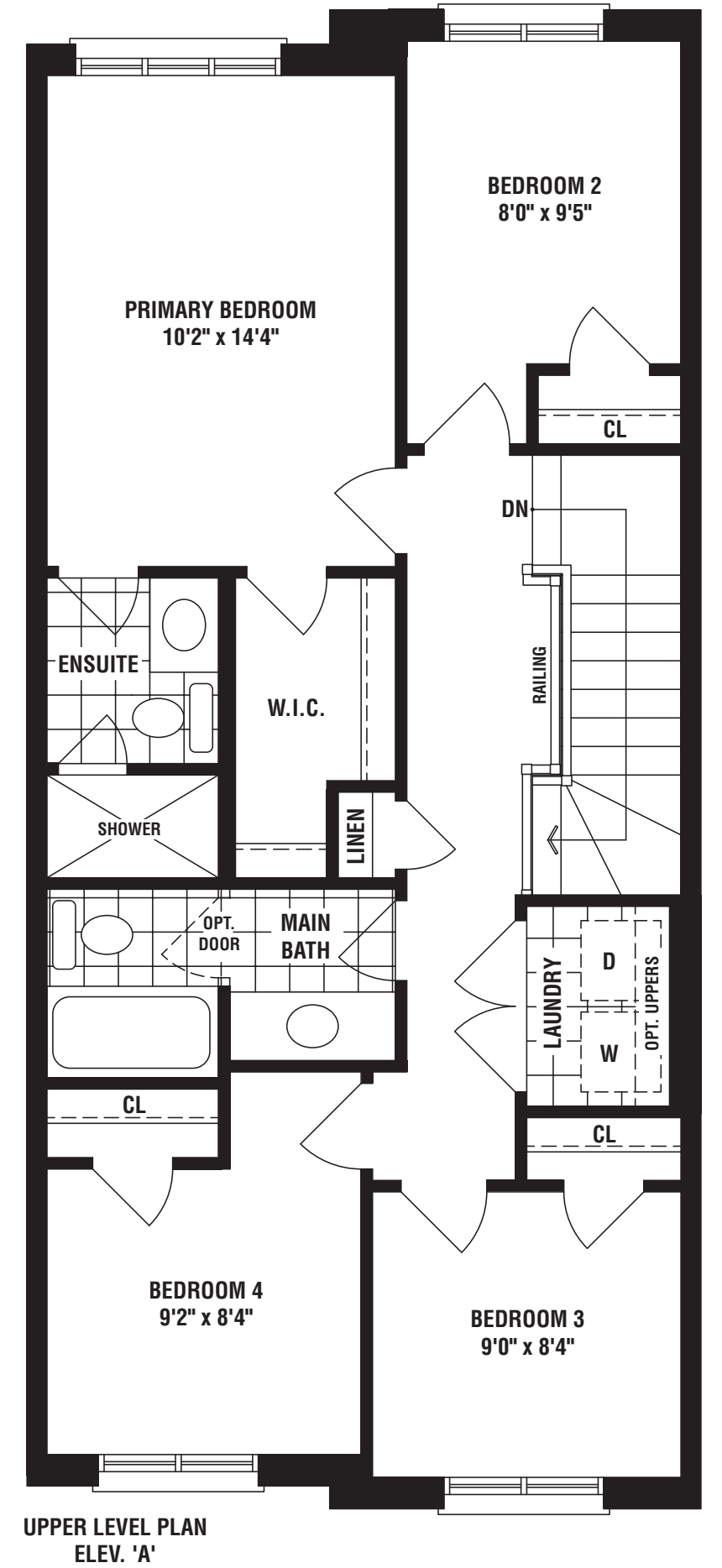
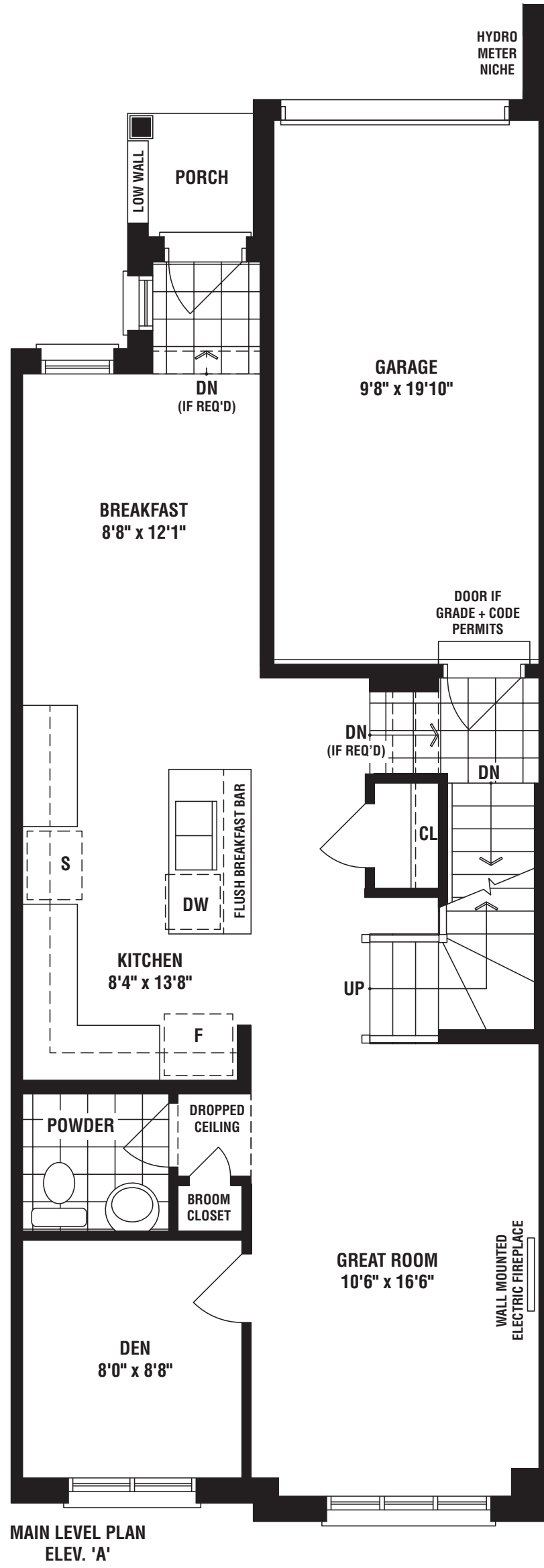
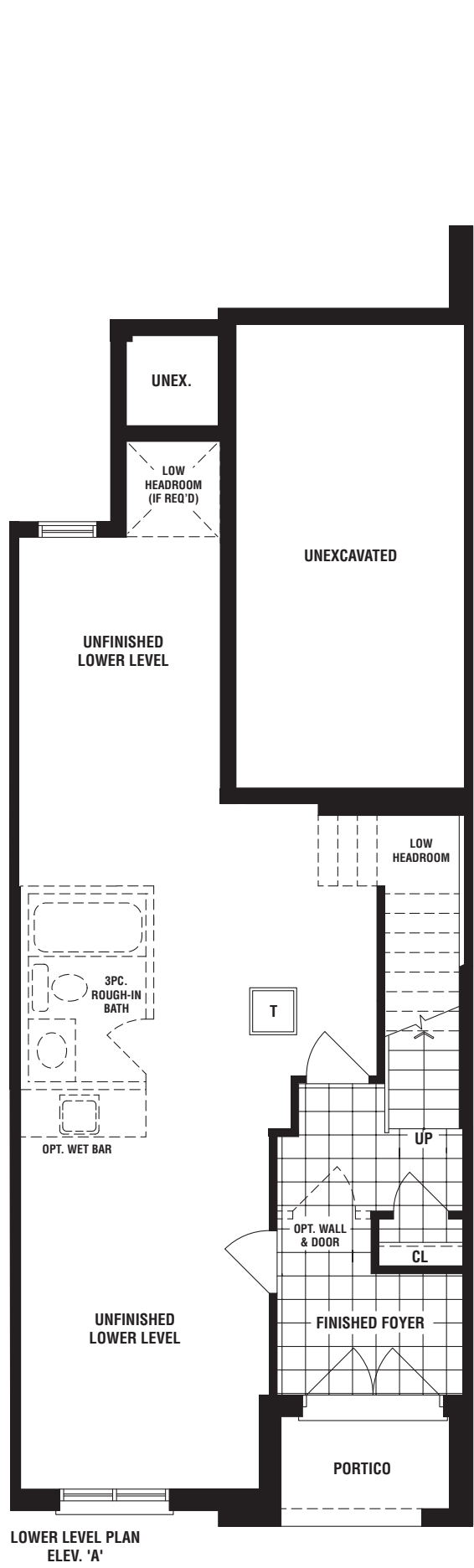
fieldgatehomes.com



Ivory

elev a • 1720 sq. ft. | elev b • 1720 sq. ft. | elev c • 1720 sq. ft.
 (including 133 sq. ft. finished lower level / not including additional 452 sq. ft. optional finished lower level)

FREEHOLD CITY TOWNS 1 CAR GARAGE / 2 CAR PARKING TOTAL



The floorplans and elevations shown, dimensions, specifications and architectural detailing are pre-construction plans and may be revised or improved as necessitated by architectural controls and the construction process. All dimensions are approximate. Actual usable floor space may vary from the stated area. House may be reversed and Purchaser agrees to accept same. Specifications subject to change without notice. Number of steps and location may vary at any exterior entrance including walk-up and walk-out basements. Illustrations are Artist's concept. Exterior railings on plans only as required by grade. E. & O.E. SCR-21 11/24.