



ELEVATION A

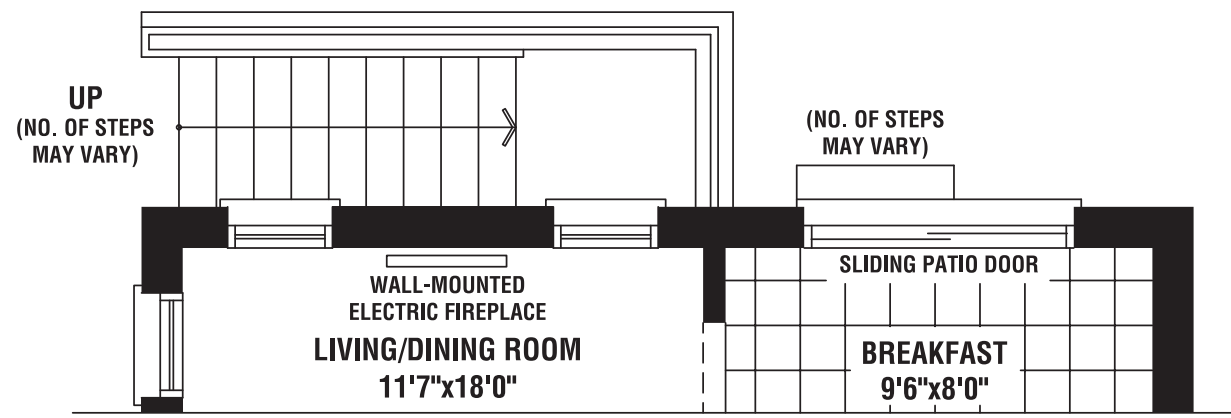


ELEVATION B

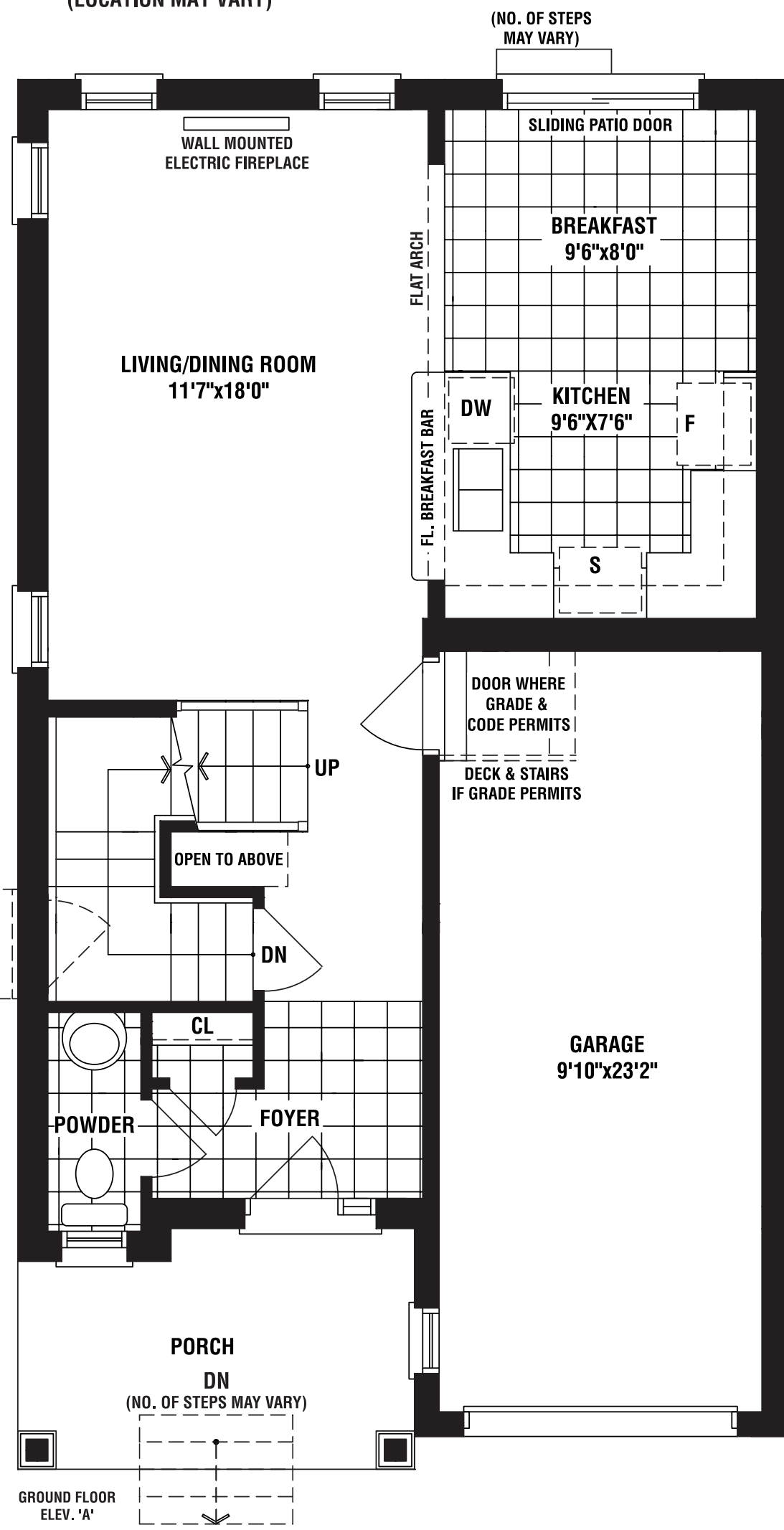


**ingleton**

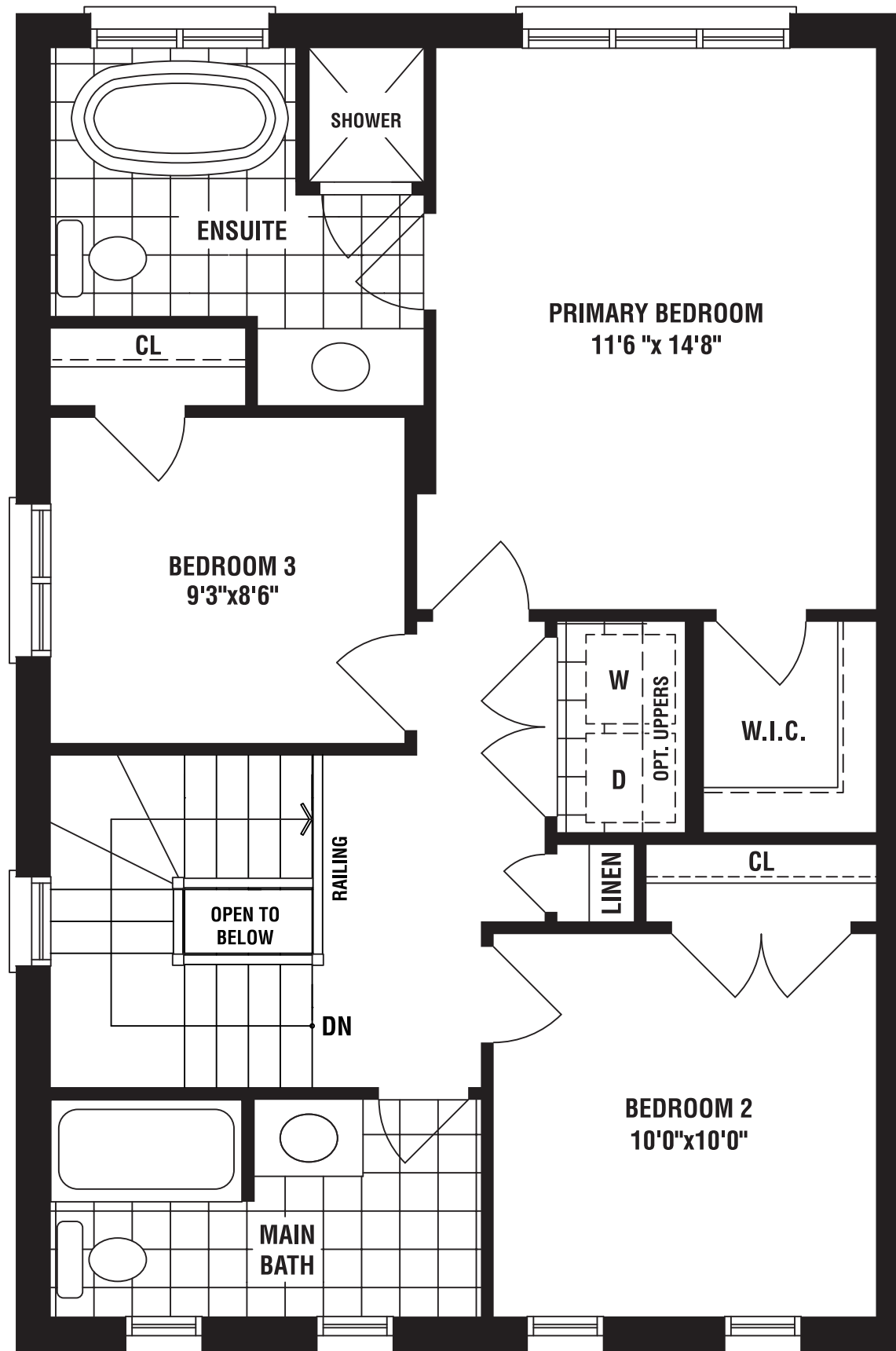
1451 SQ FT (ELEV A) | 1473 SQ FT (ELEV B)



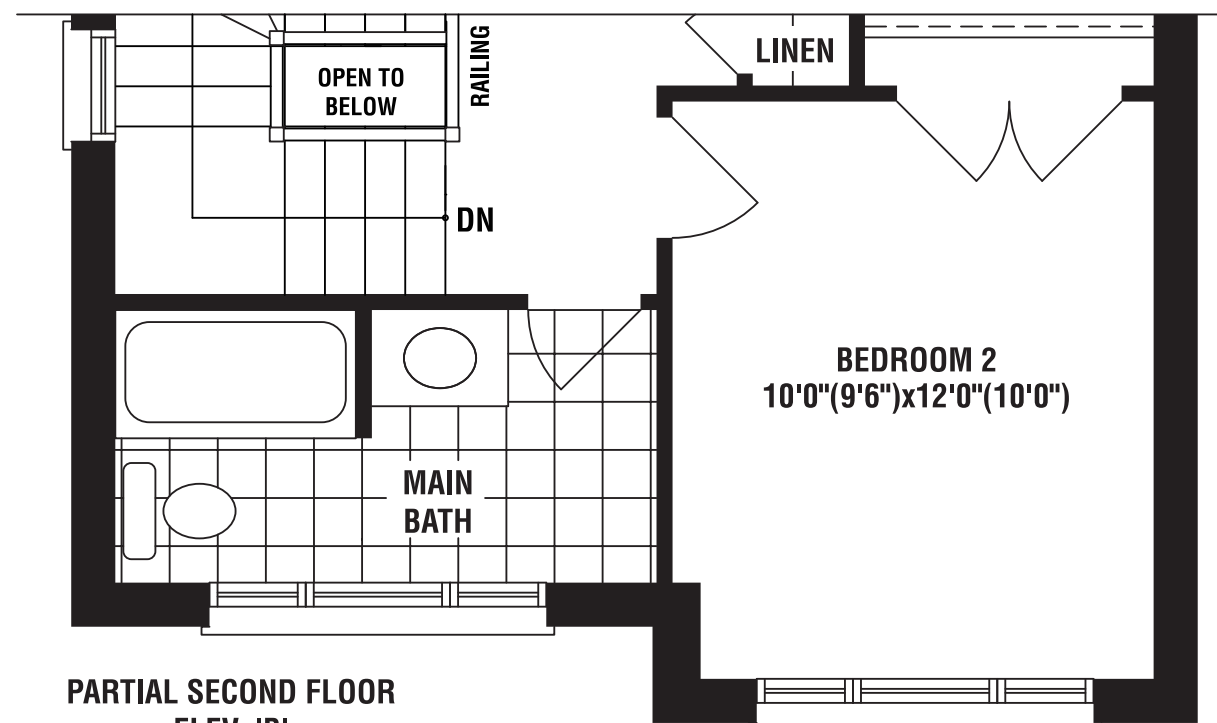
PARTIAL GROUND FLOOR PLAN  
OPT. WALK UP BASEMENT CONDITION  
(SUBJECT TO GRADING APPROVAL)  
(LOCATION MAY VARY)



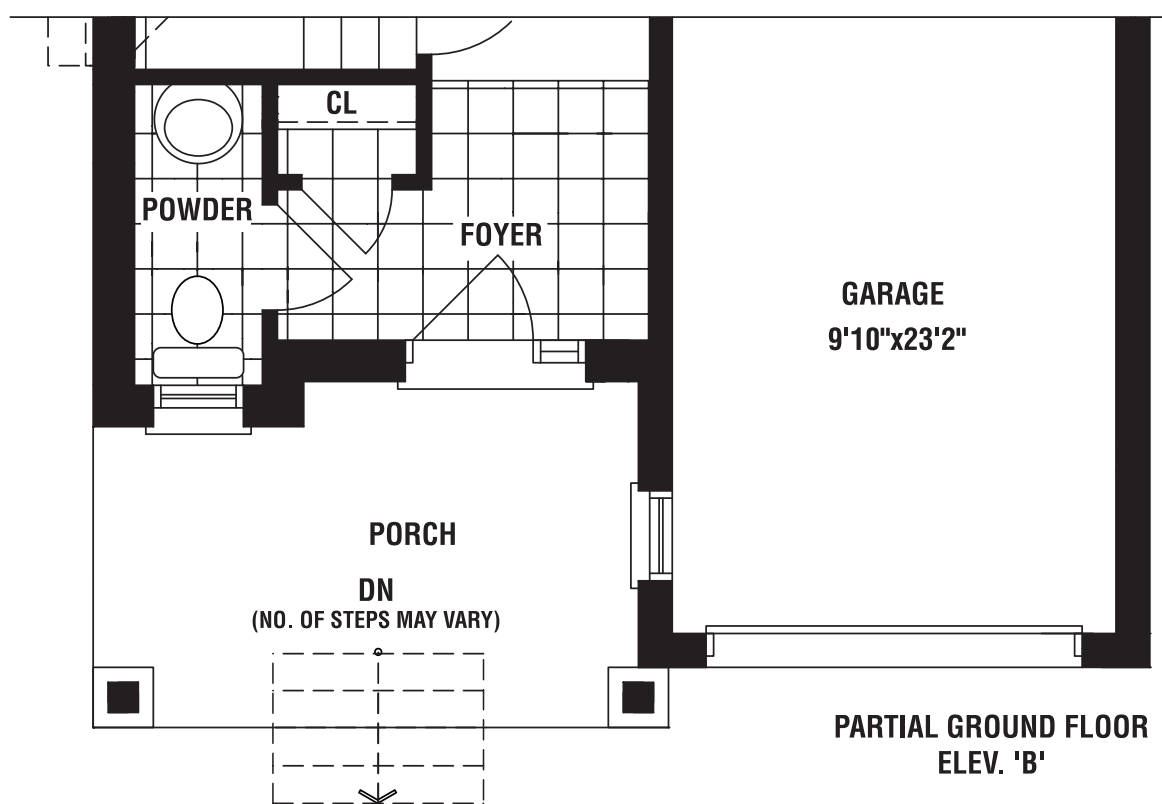
GROUND FLOOR  
ELEV. 'A'



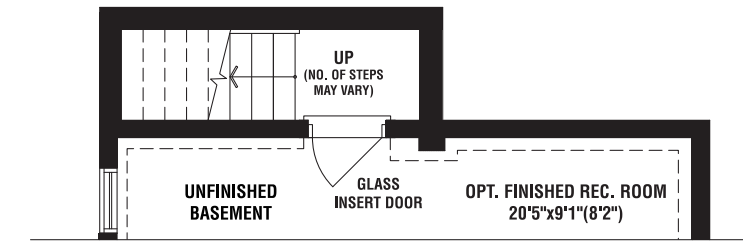
SECOND FLOOR  
ELEV. 'A'



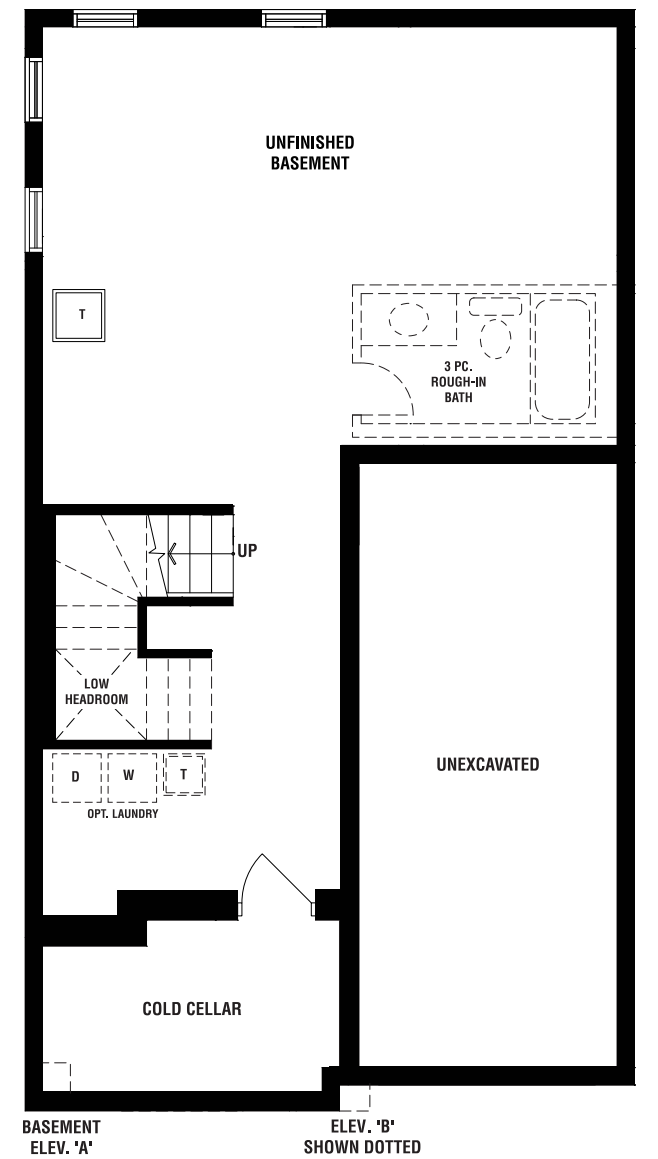
PARTIAL SECOND FLOOR  
ELEV. 'B'



PARTIAL GROUND FLOOR  
ELEV. 'B'

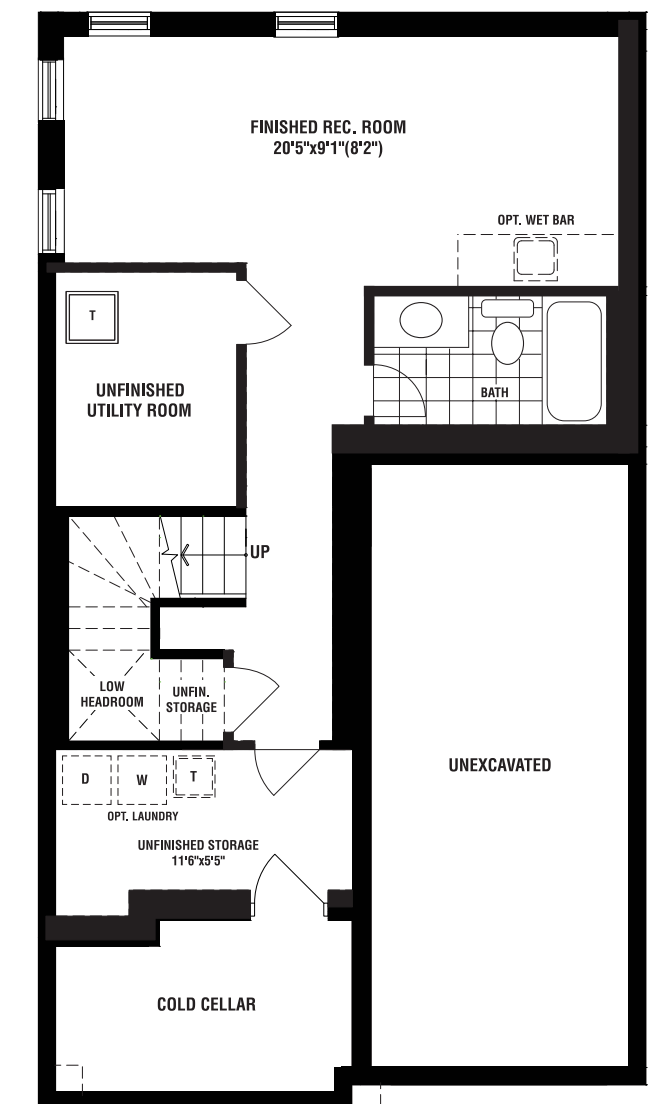


PARTIAL BASEMENT PLAN  
OPT. WALK UP BASEMENT CONDITION  
(SUBJECT TO GRADING APPROVAL)  
(LOCATION MAY VARY)



BASEMENT  
ELEV. 'A'

ELEV. 'B'  
SHOWN DOTTED



OPT. FINISHED BASEMENT  
ELEV. 'A'

ELEV. 'B'  
SHOWN DOTTED



ELEVATION A



ELEVATION B

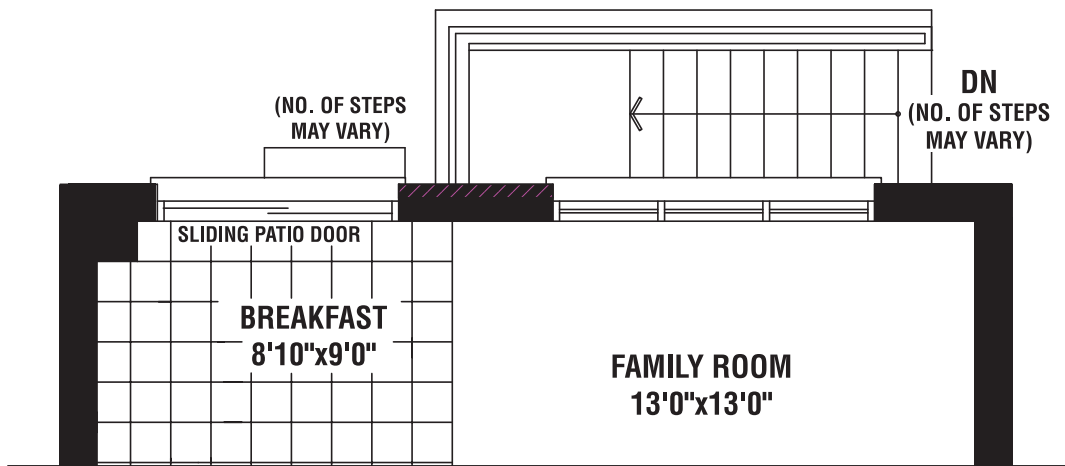


# west cliff

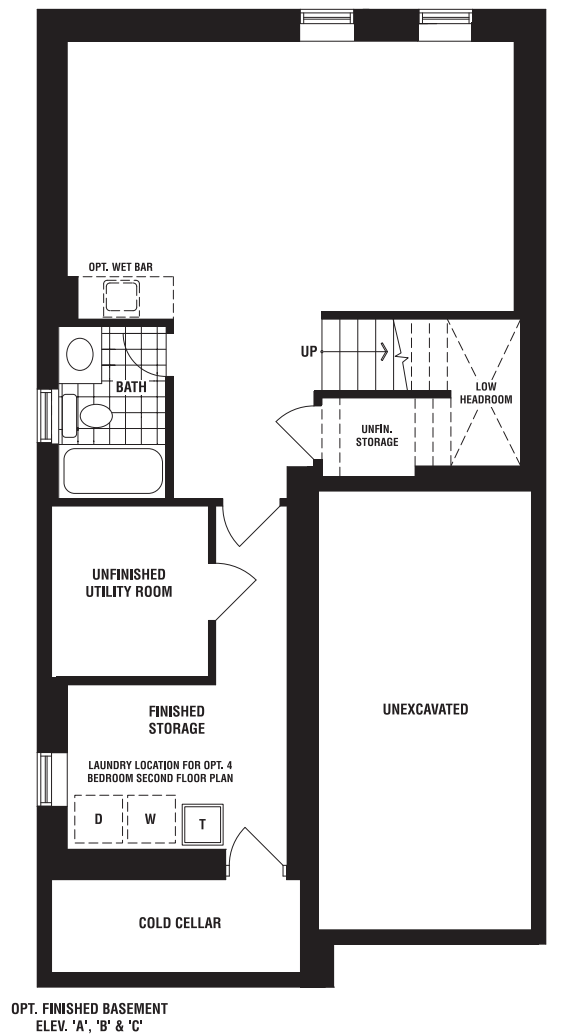
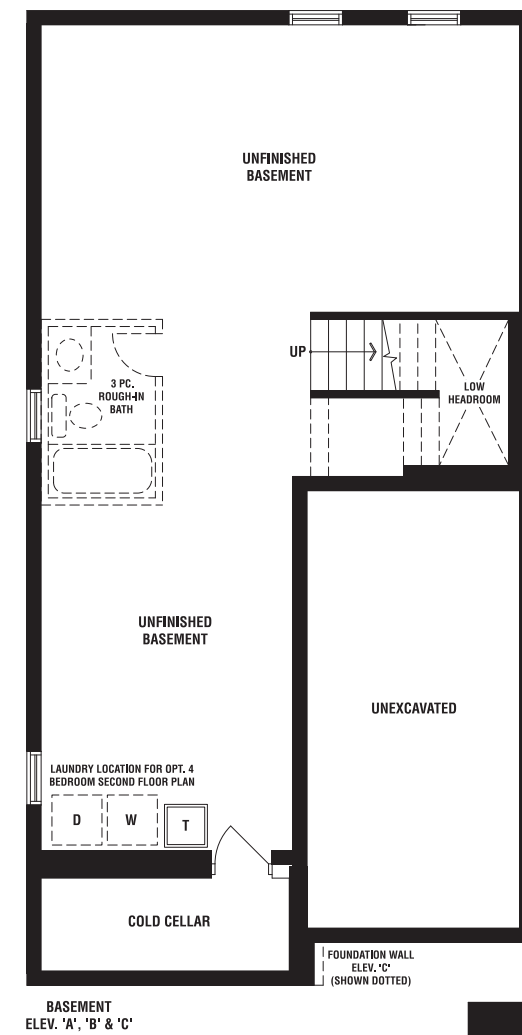
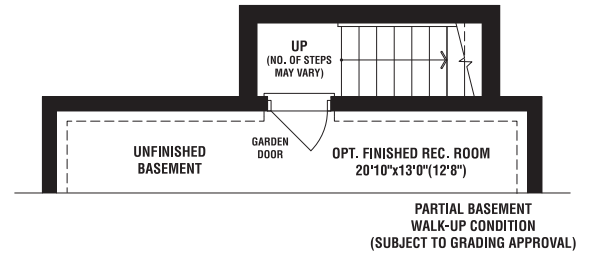
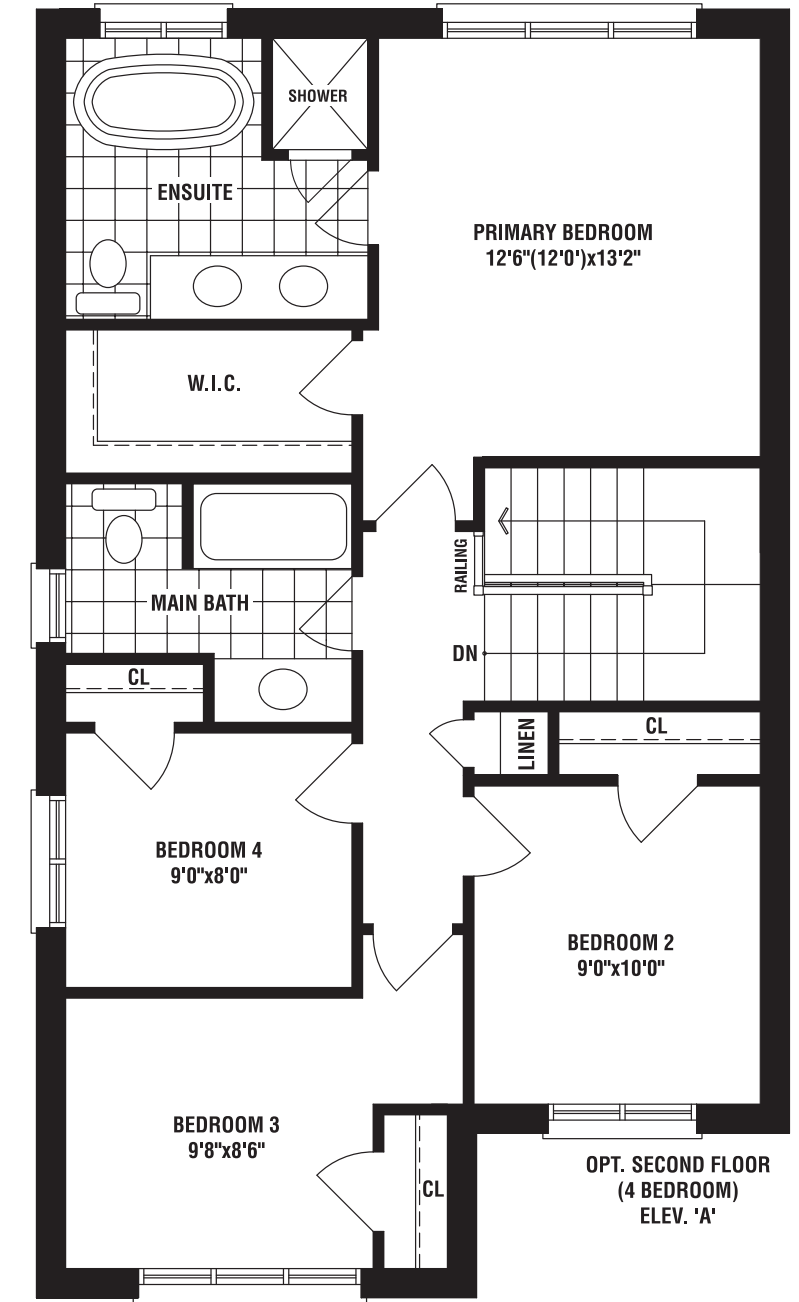
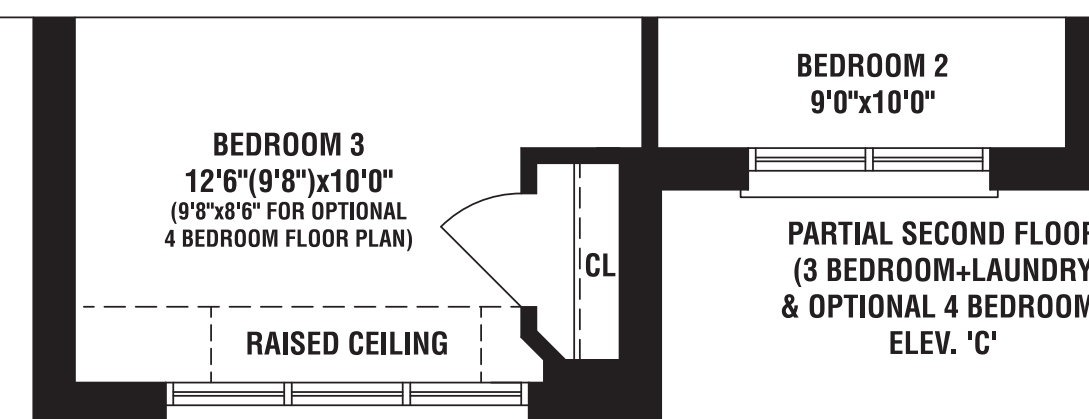
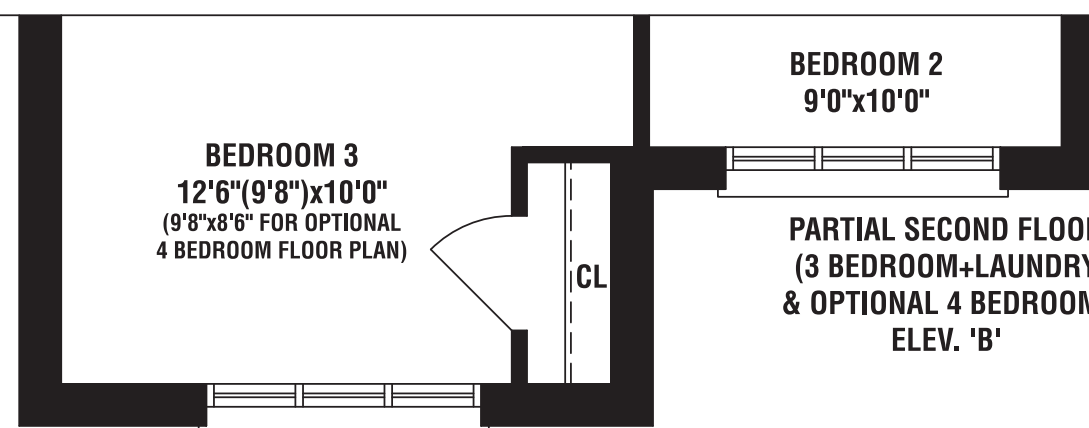
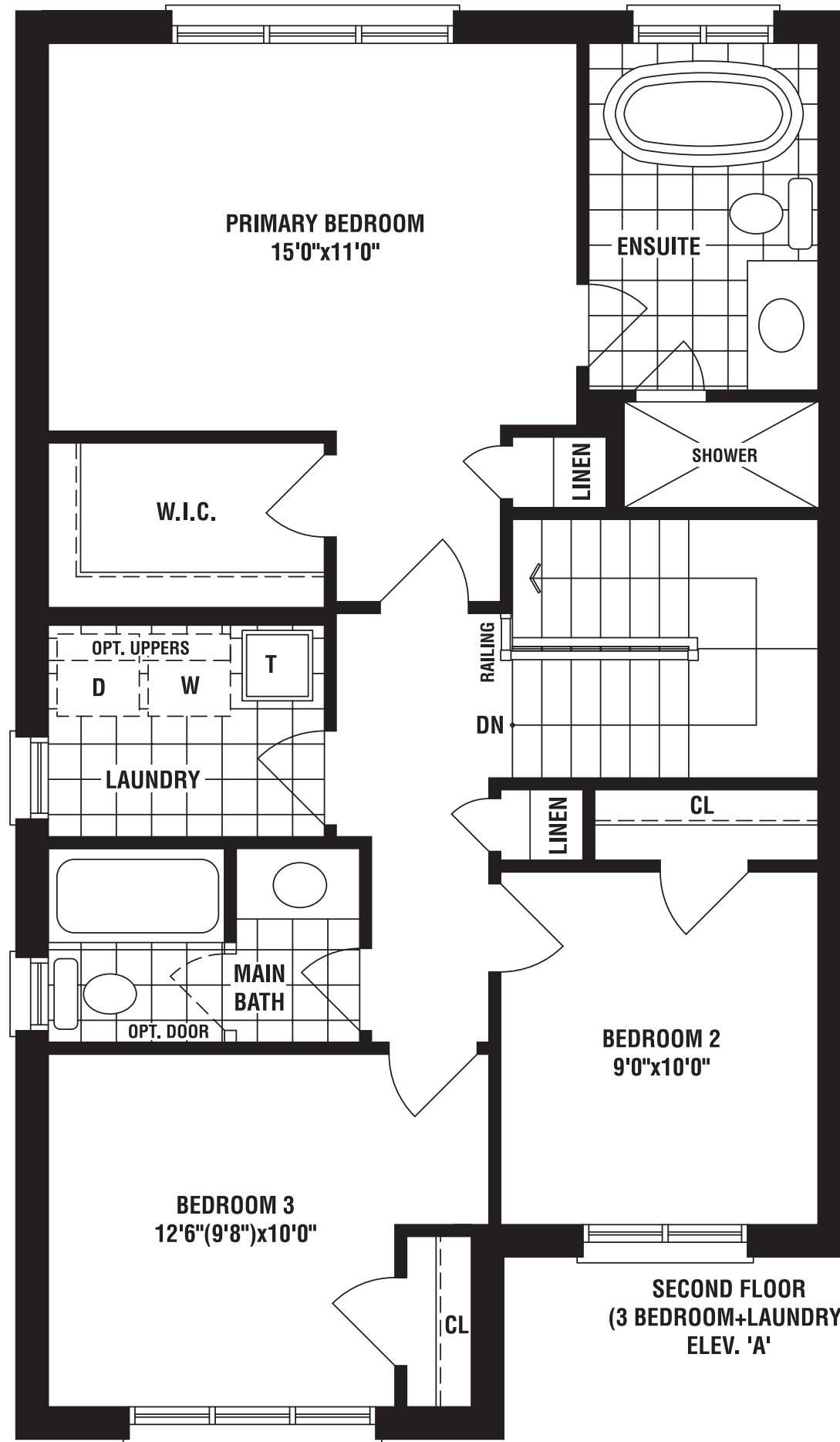
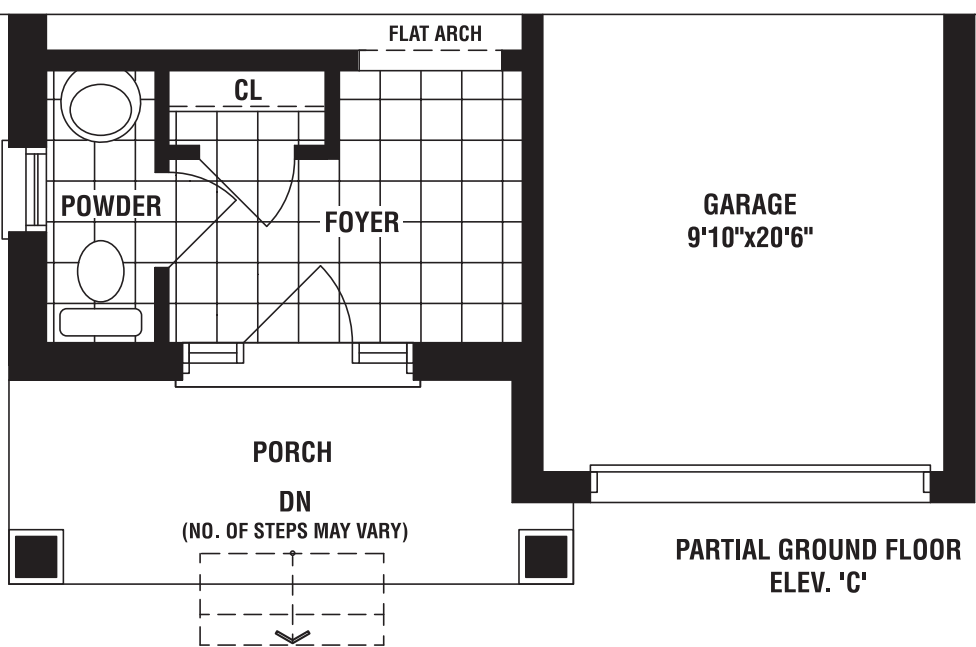
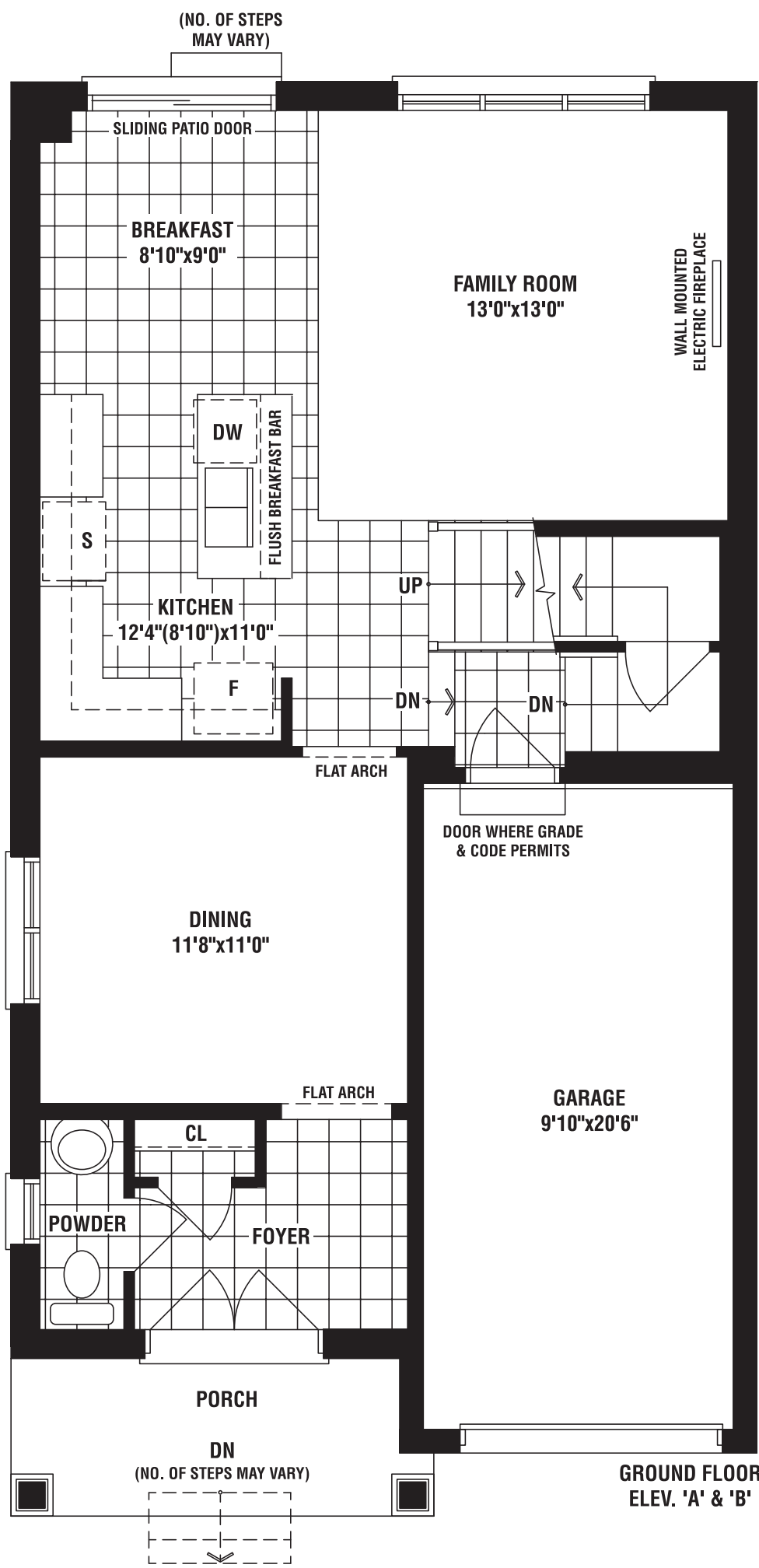
1673 SQ FT (ELEV A) | 1673 SQ FT (ELEV B) | 1673 SQ FT (ELEV C)



ELEVATION C



PARTIAL GROUND FLOOR PLAN  
OPT. WALK UP BASEMENT CONDITION  
(SUBJECT TO GRADING APPROVAL)  
(LOCATION MAY VARY)

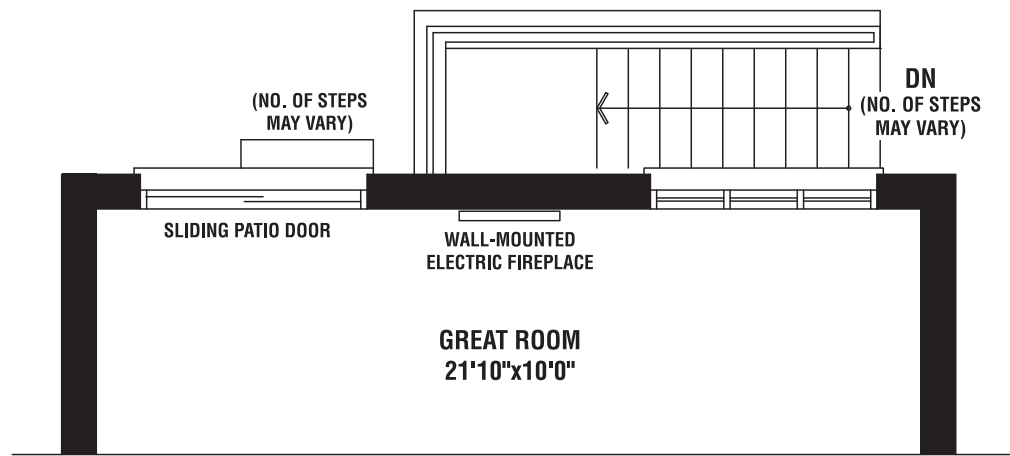




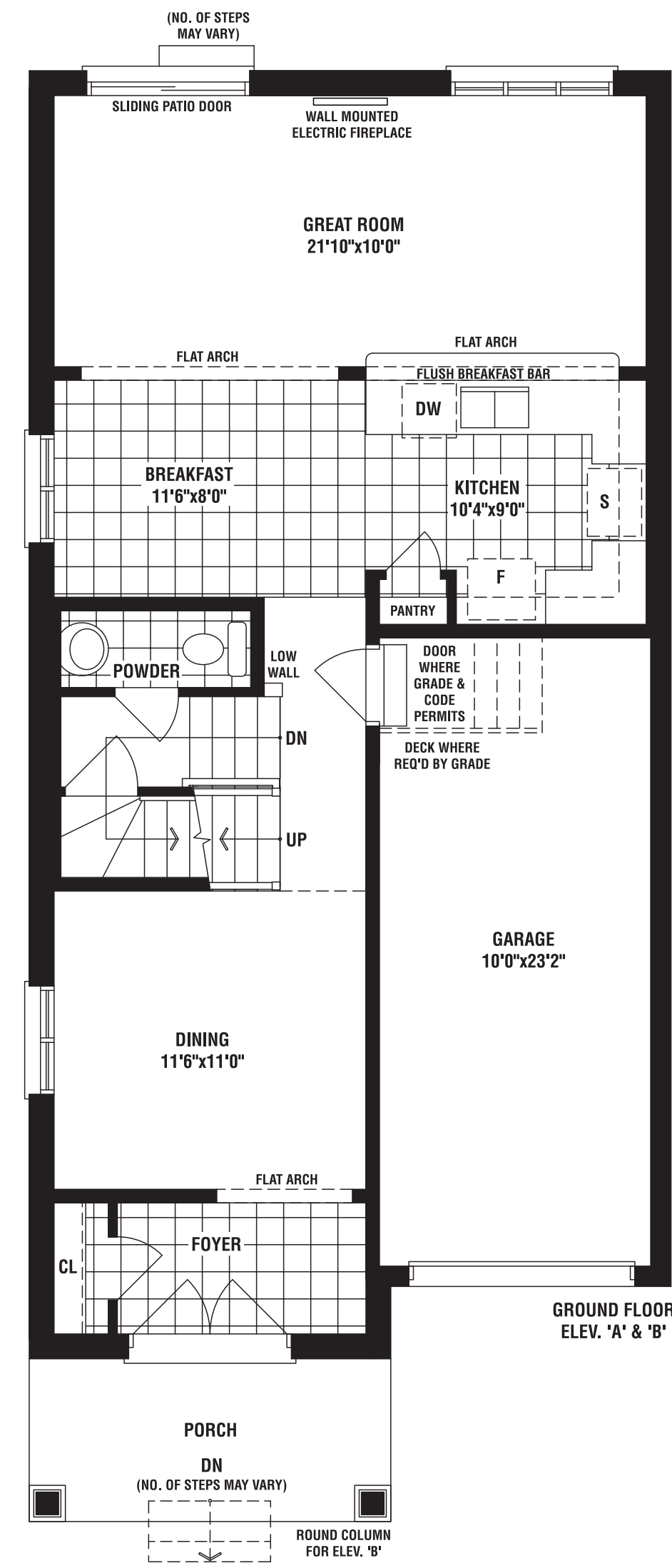
# castle park

1880 SQ FT (ELEV A) | 1880 SQ FT (ELEV B) | 1880 SQ FT (ELEV C)

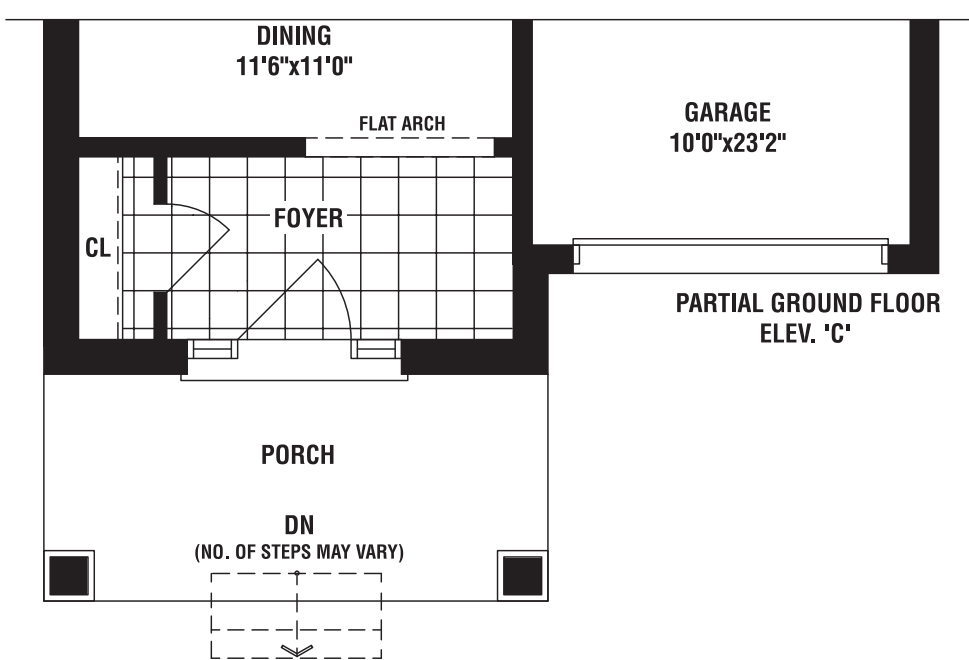




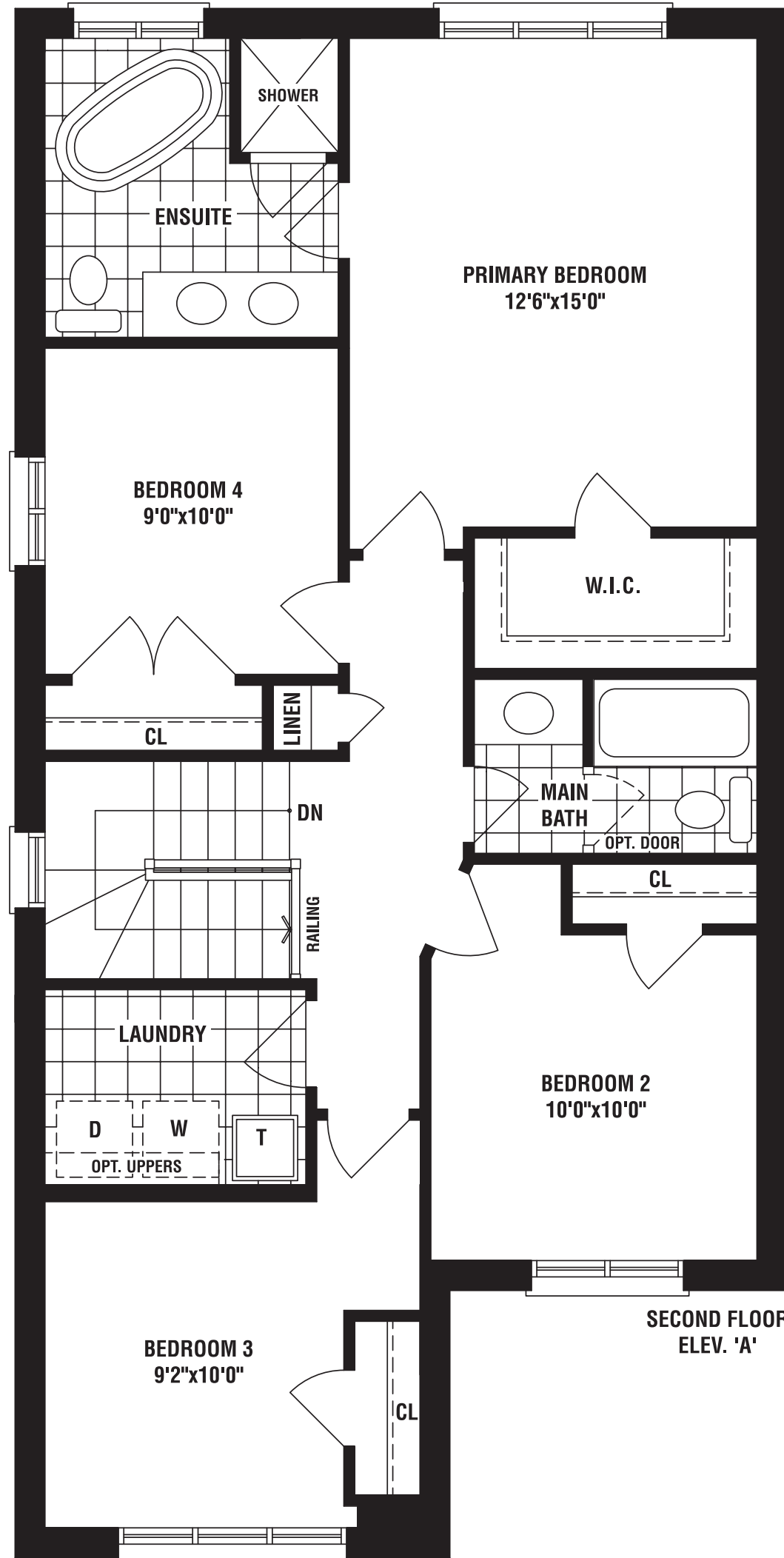
PARTIAL GROUND FLOOR PLAN  
 OPT. WALK UP BASEMENT CONDITION  
 (SUBJECT TO GRADING APPROVAL)  
 (LOCATION MAY VARY)



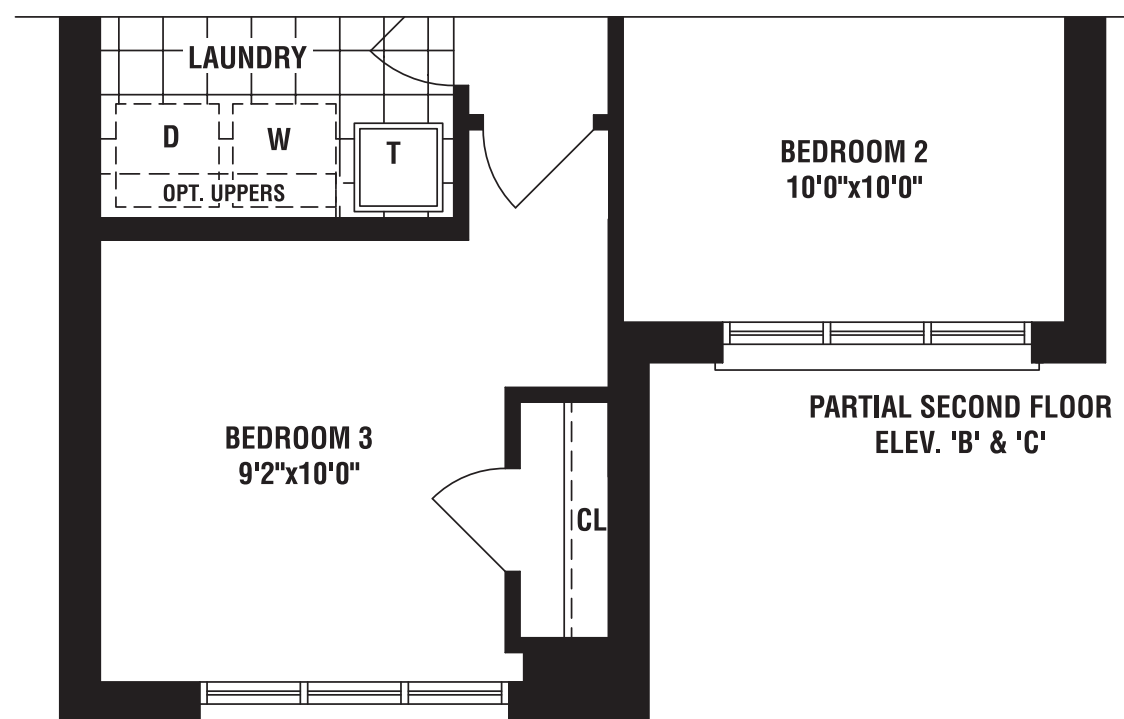
GROUND FLOOR  
 ELEV. 'A' & 'B'



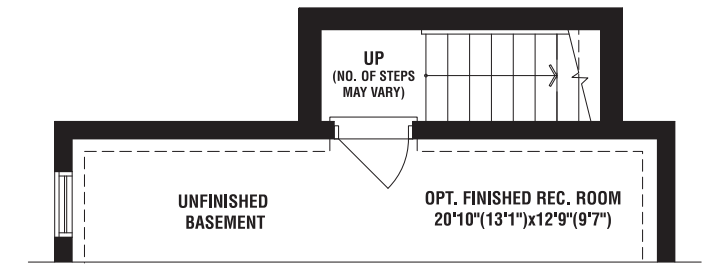
PARTIAL GROUND FLOOR  
 ELEV. 'C'



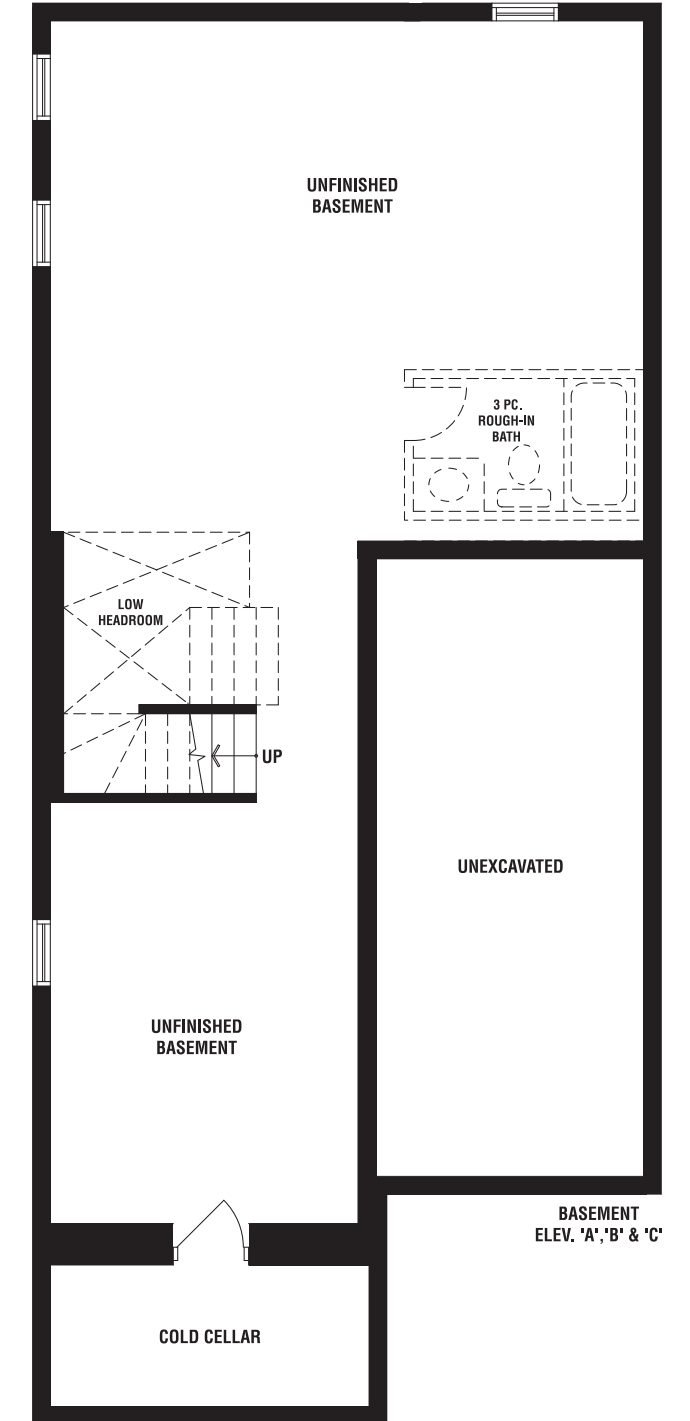
SECOND FLOOR  
 ELEV. 'A'



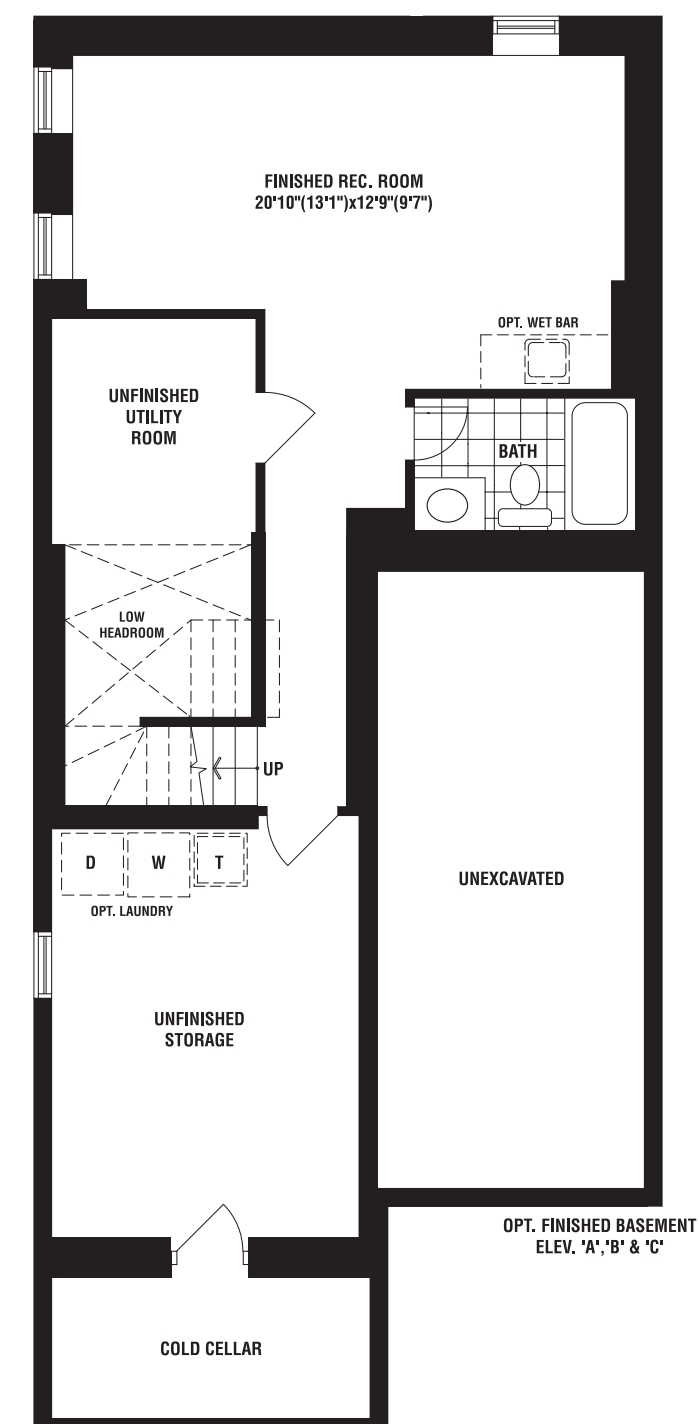
PARTIAL SECOND FLOOR  
 ELEV. 'B' & 'C'



PARTIAL BASEMENT PLAN  
 OPT. WALK UP BASEMENT CONDITION  
 (SUBJECT TO GRADING APPROVAL)  
 (LOCATION MAY VARY)



BASEMENT  
 ELEV. 'A', 'B' & 'C'



OPT. FINISHED BASEMENT  
 ELEV. 'A', 'B' & 'C'



ELEVATION A

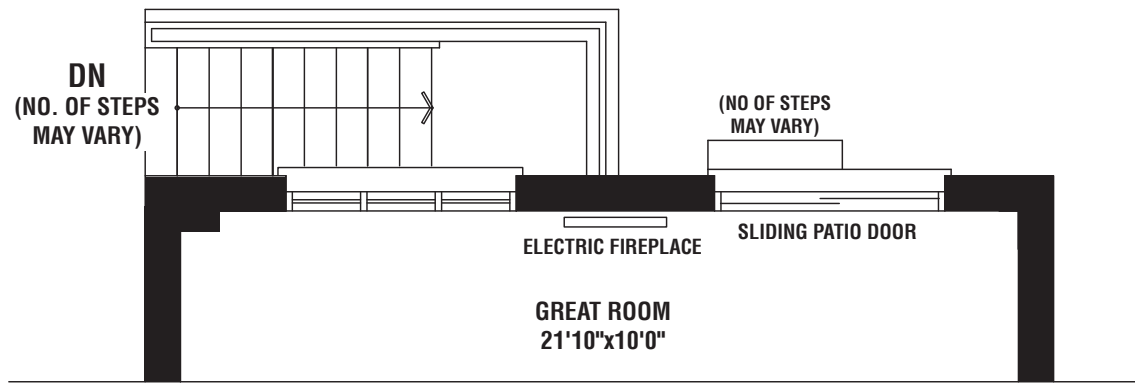


ELEVATION B

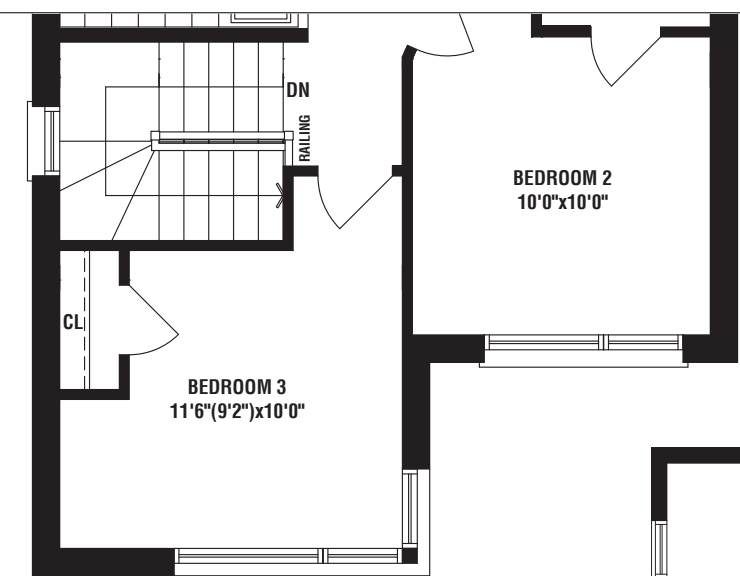
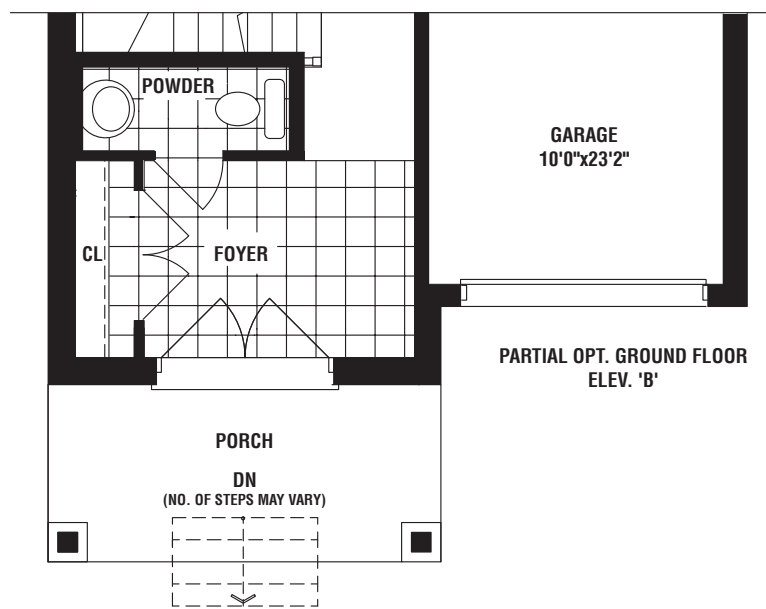
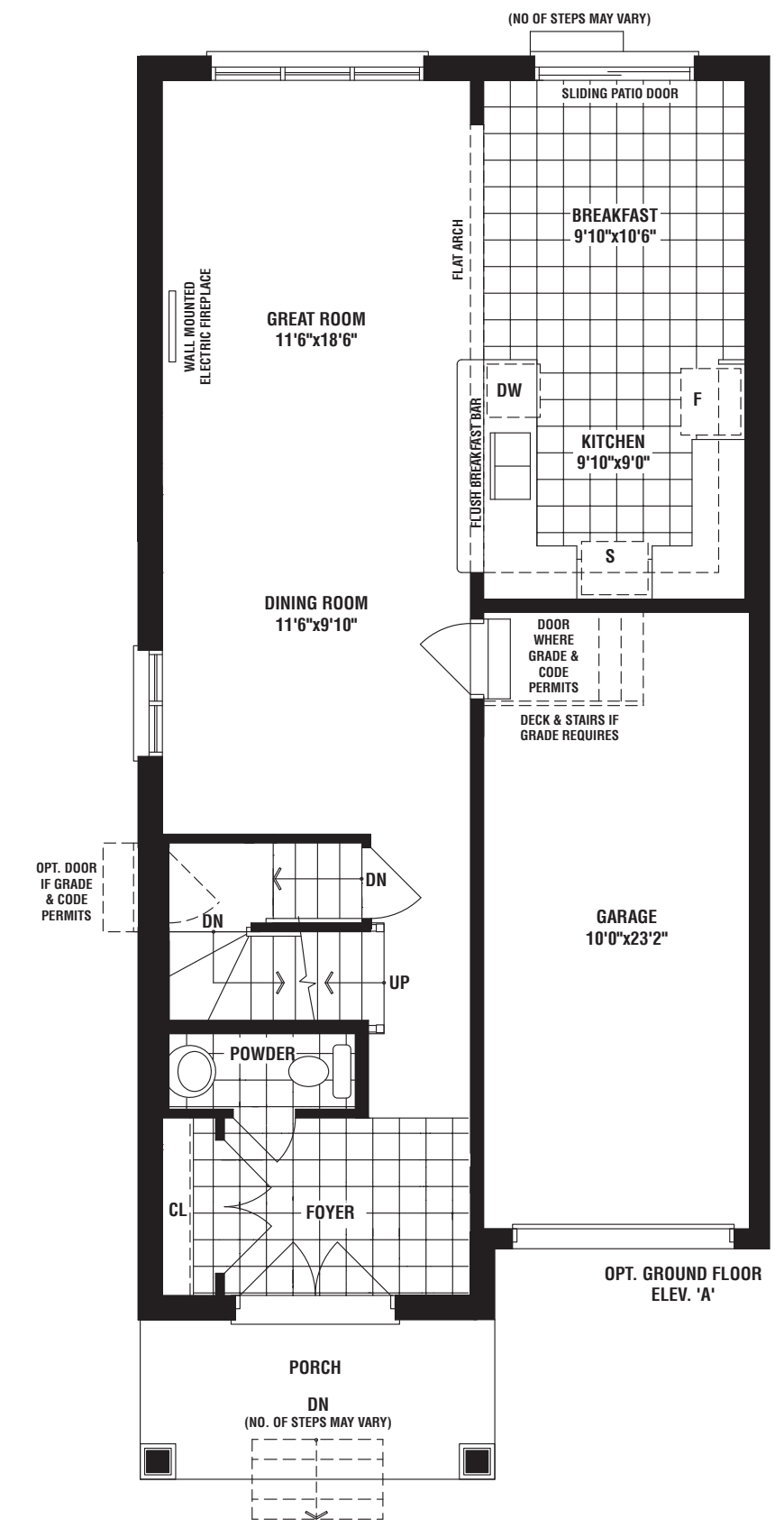
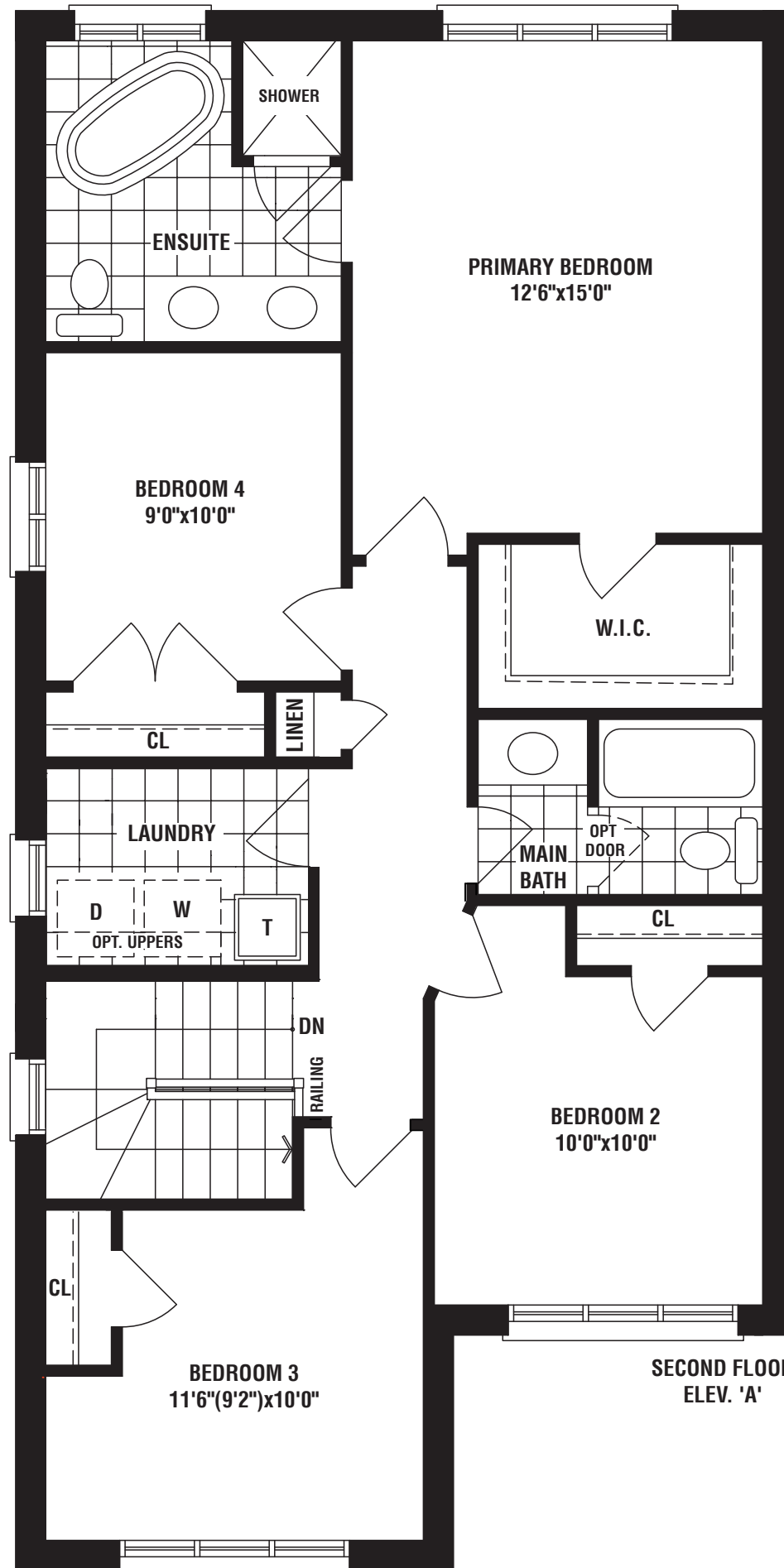


**winston**

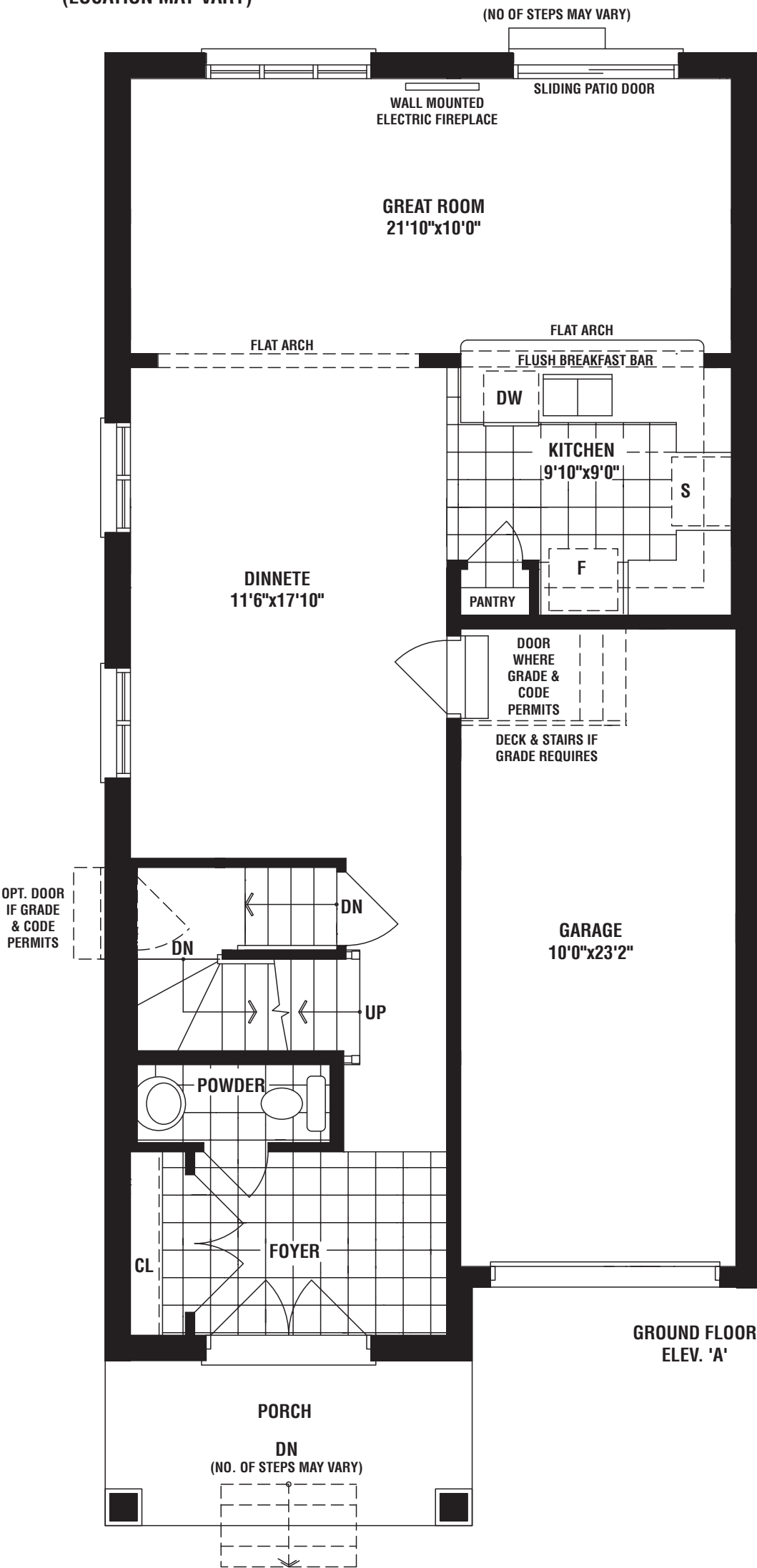
1890 SQ FT (ELEV A) | 1890 SQ FT (ELEV B)



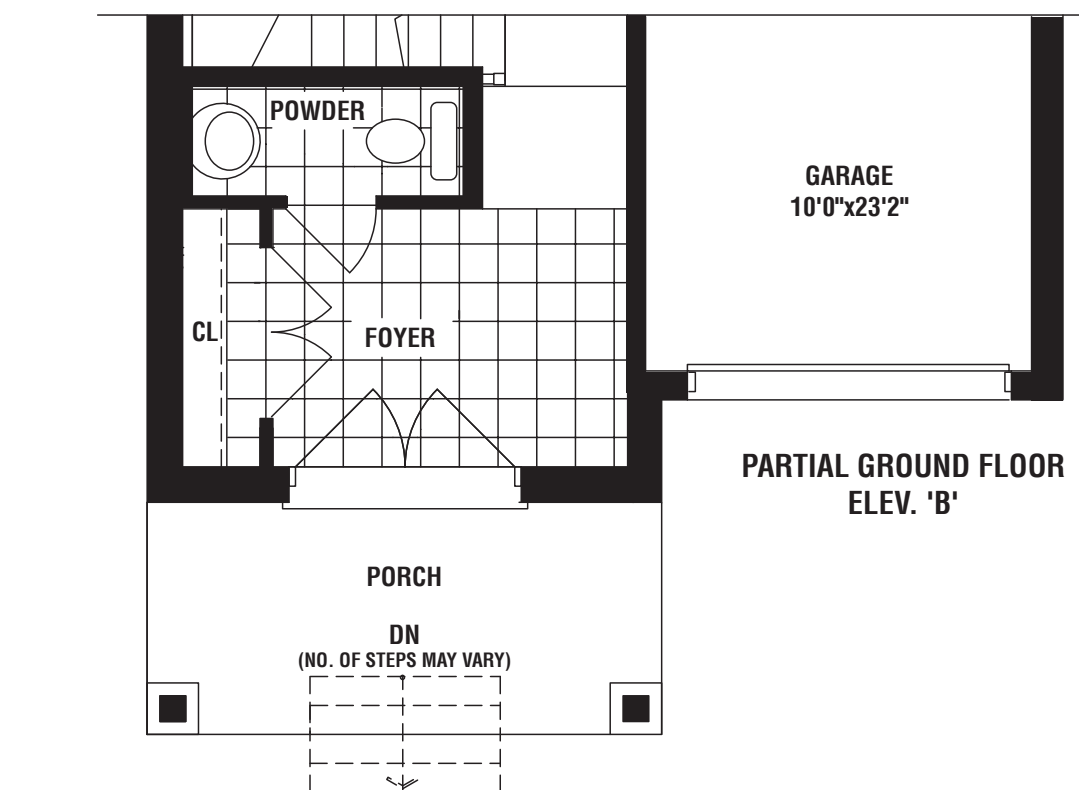
PARTIAL GROUND FLOOR PLAN  
OPT. WALK UP BASEMENT CONDITION  
(SUBJECT TO GRADING APPROVAL)  
(LOCATION MAY VARY)



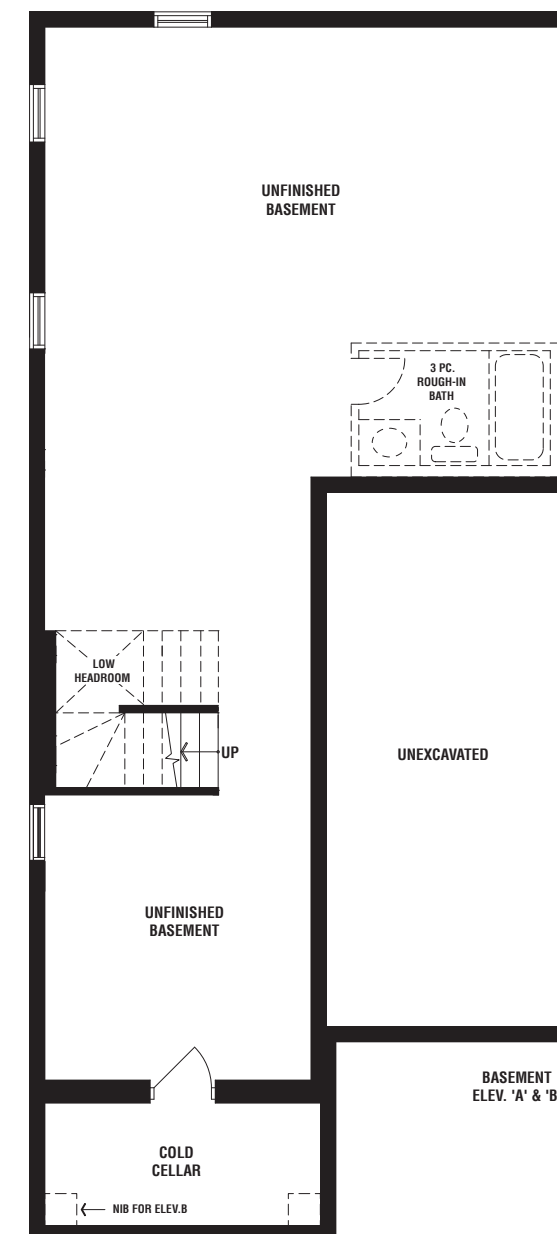
PARTIAL SECOND FLOOR PLAN  
ELEV. 'B'



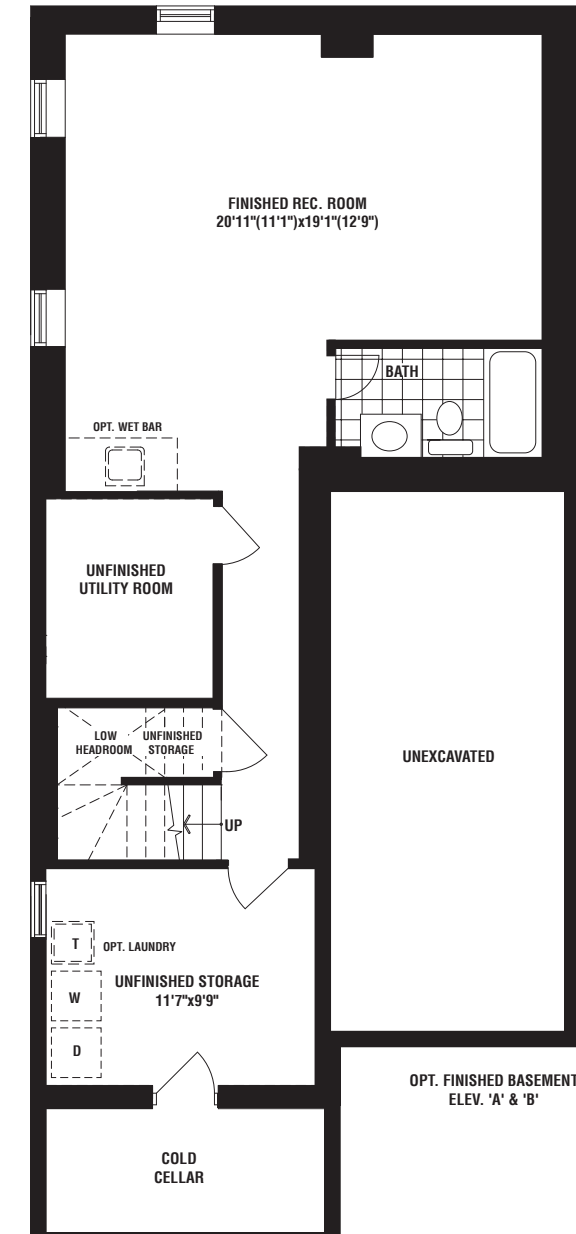
GROUND FLOOR PLAN  
ELEV. 'A'



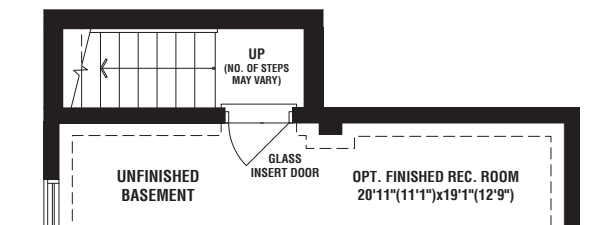
PARTIAL GROUND FLOOR PLAN  
ELEV. 'B'



BASEMENT PLAN  
ELEV. 'A' & 'B'



OPT. FINISHED BASEMENT PLAN  
ELEV. 'A' & 'B'



PARTIAL BASEMENT PLAN  
OPT. WALK UP BASEMENT CONDITION  
(SUBJECT TO GRADING APPROVAL)  
(LOCATION MAY VARY)





ELEVATION A

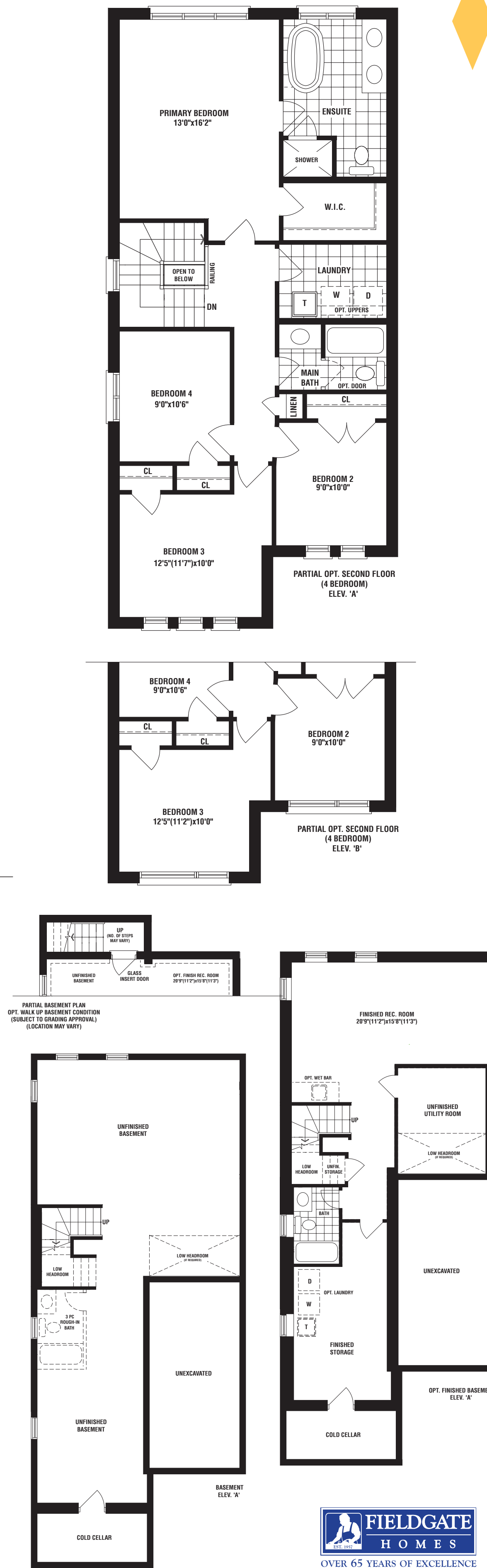
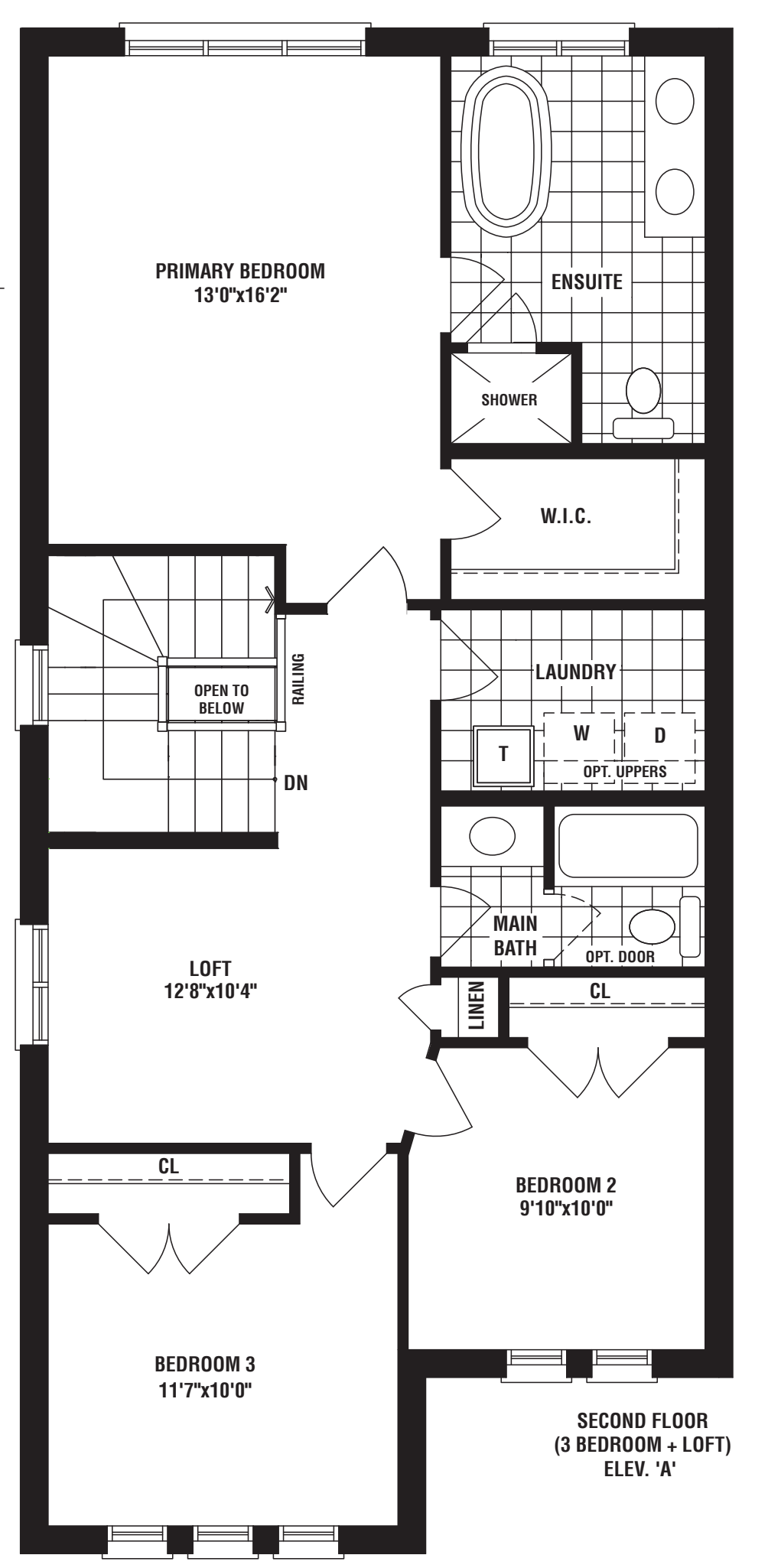
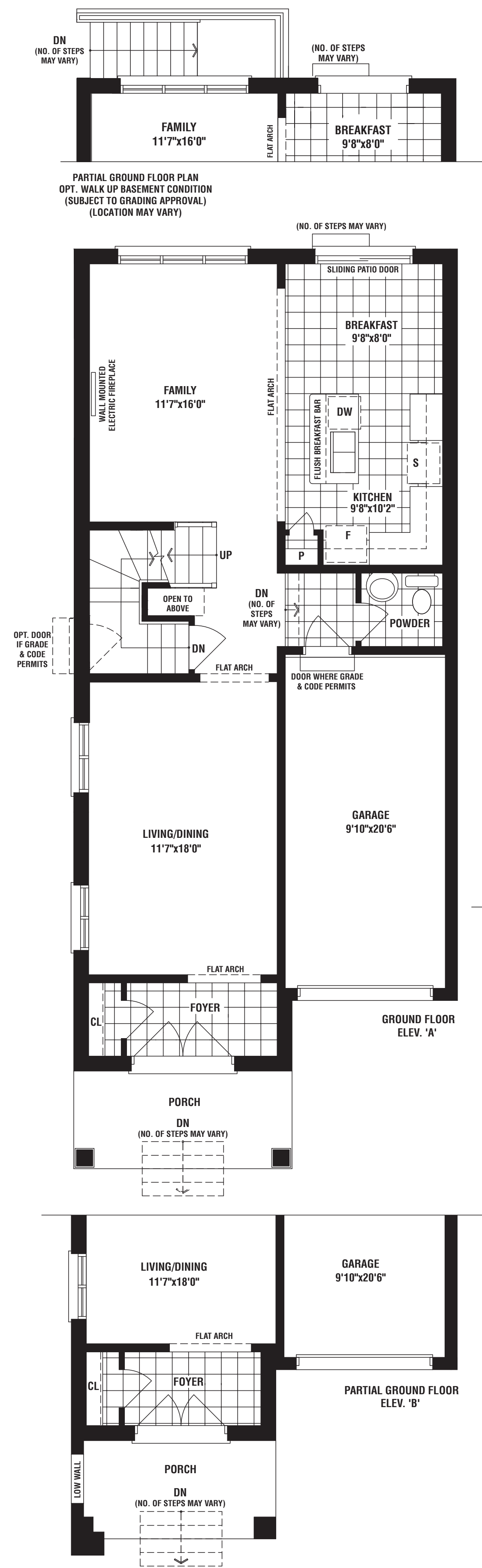


ELEVATION B



**forcett**

2048 SQ FT (ELEV A) | 2048 SQ FT (ELEV B)



The floorplans and elevations shown, dimensions, specifications and architectural detailing are pre-construction plans and may be revised or improved as necessitated by architectural controls and the construction process. All dimensions are approximate. Actual usable floor space may vary from the stated area. House may be reversed and Purchaser agrees to accept same. Specifications subject to change without notice. Number of steps and location may vary at any exterior entrance. Illustrations are Artist's concept. Exterior railings on plans only as required by grade. E. & O.E. WM30-14 04/24



ELEVATION A



ELEVATION B

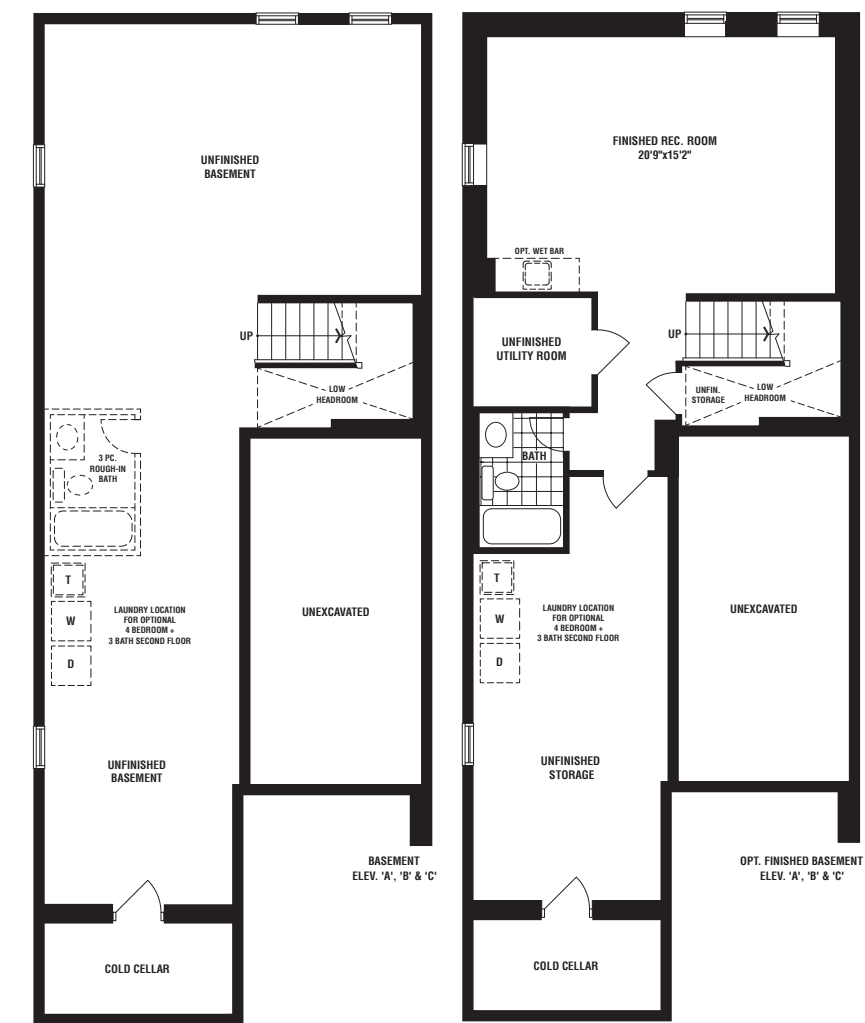
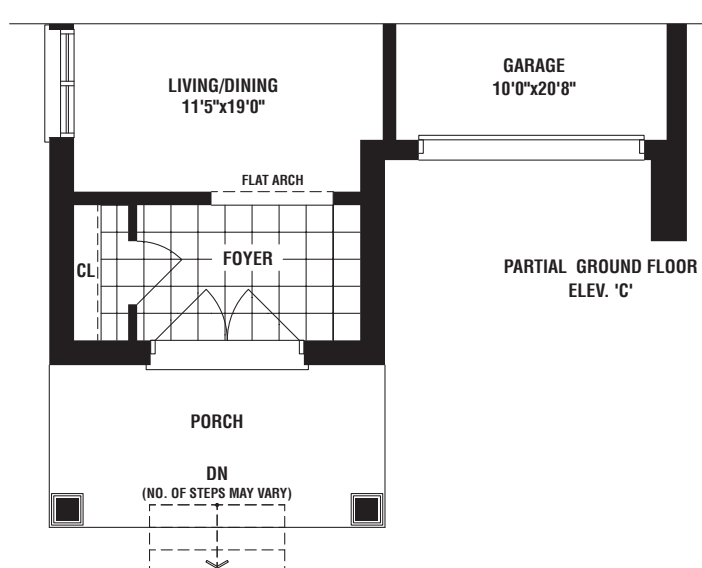
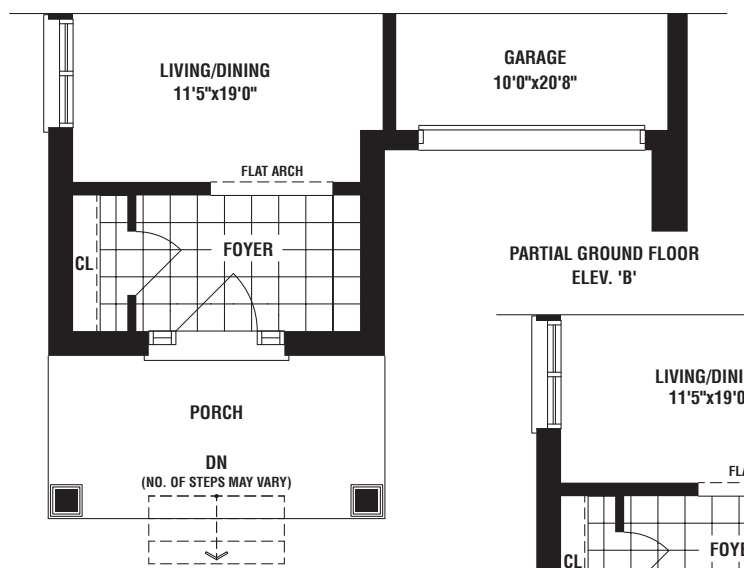
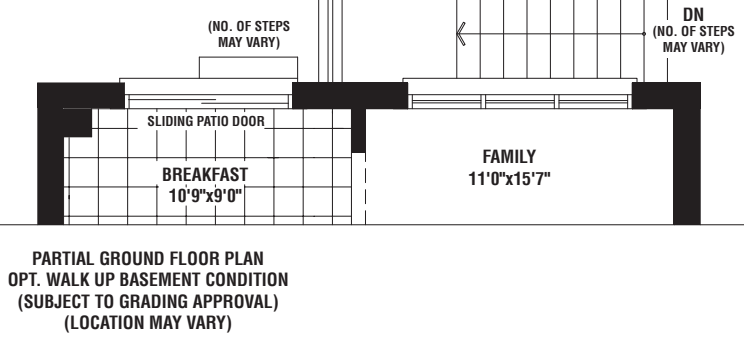
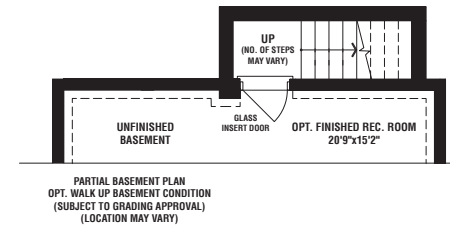
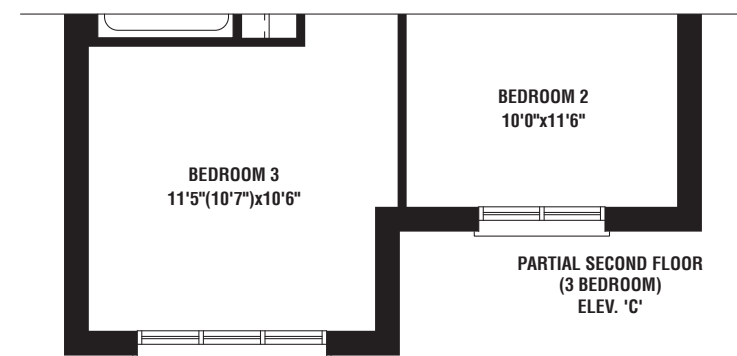
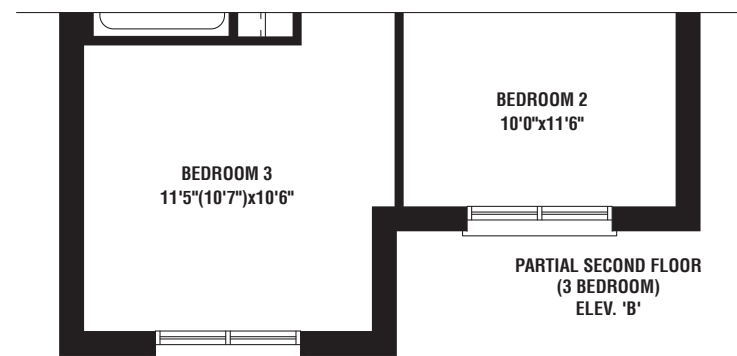
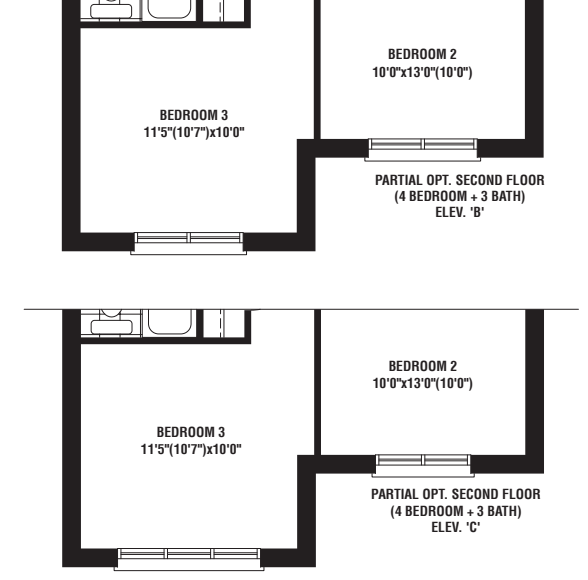
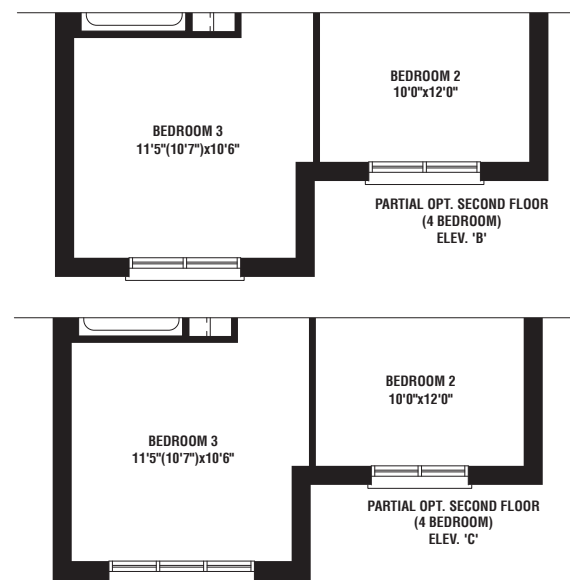
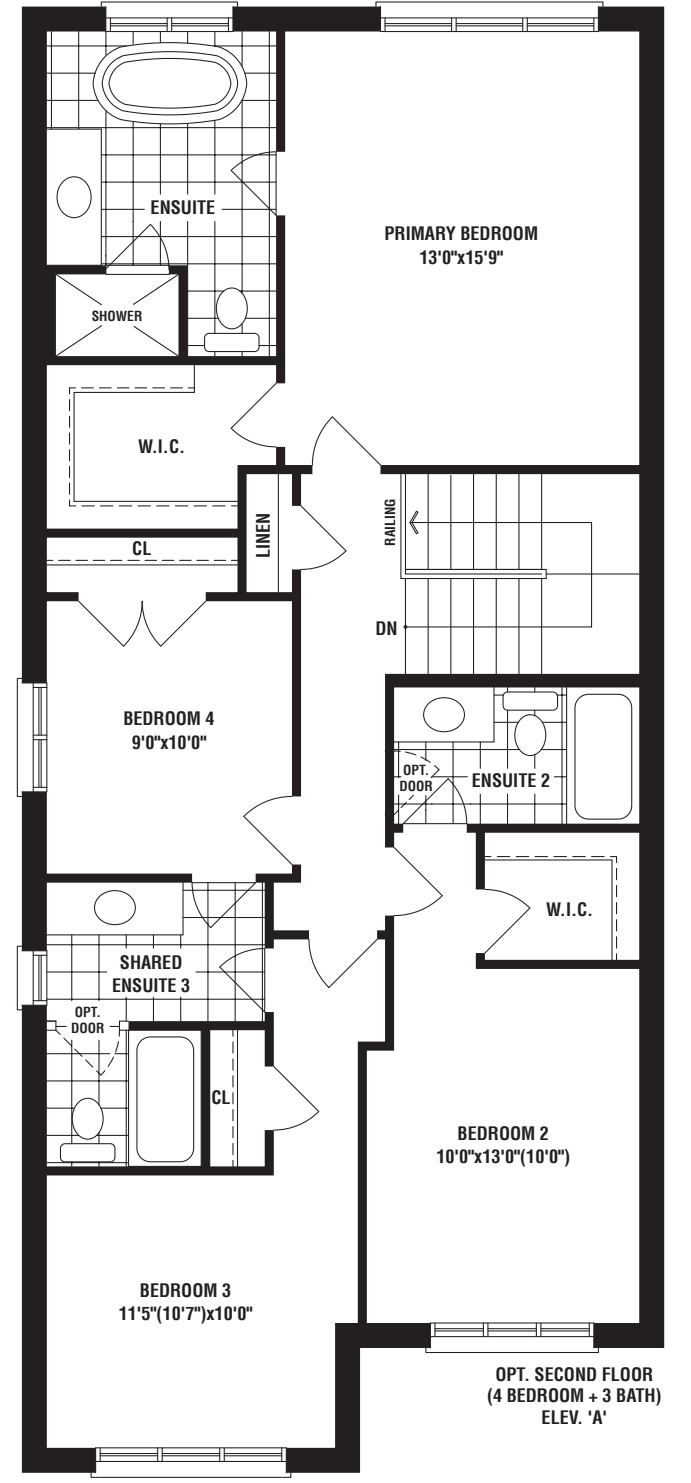
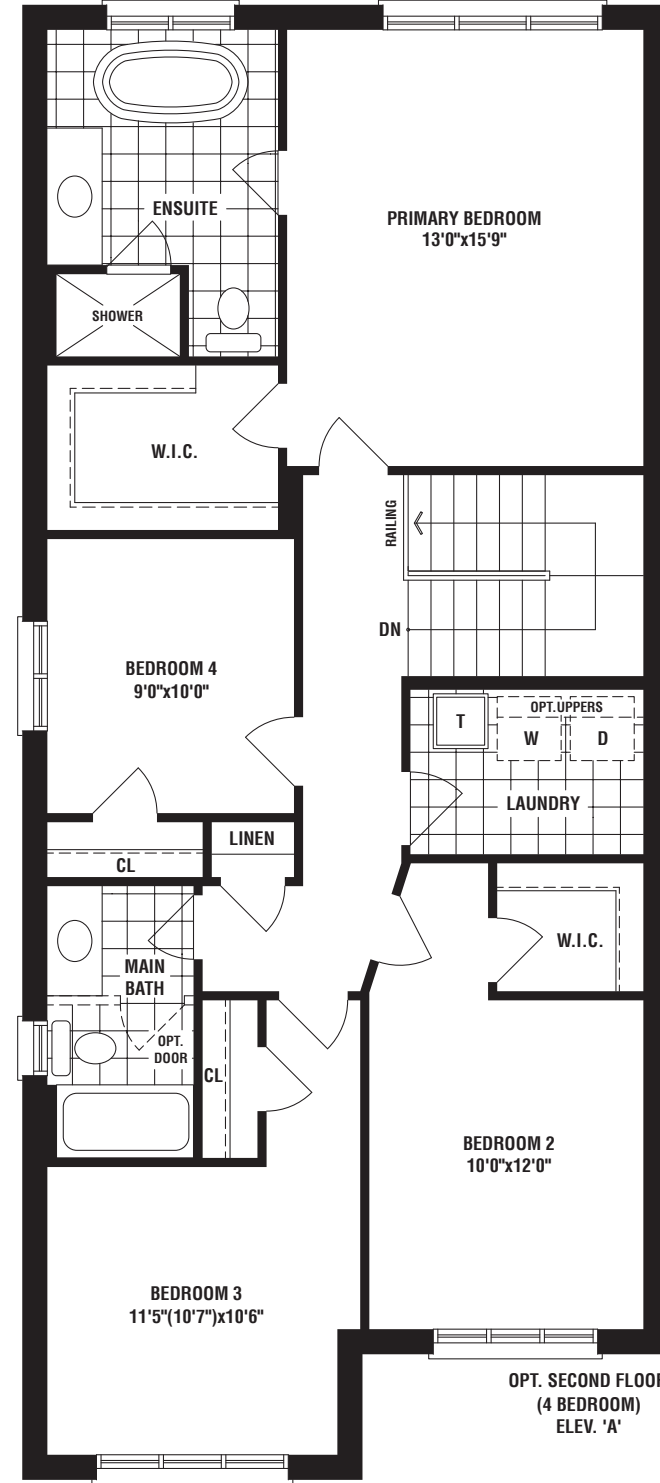
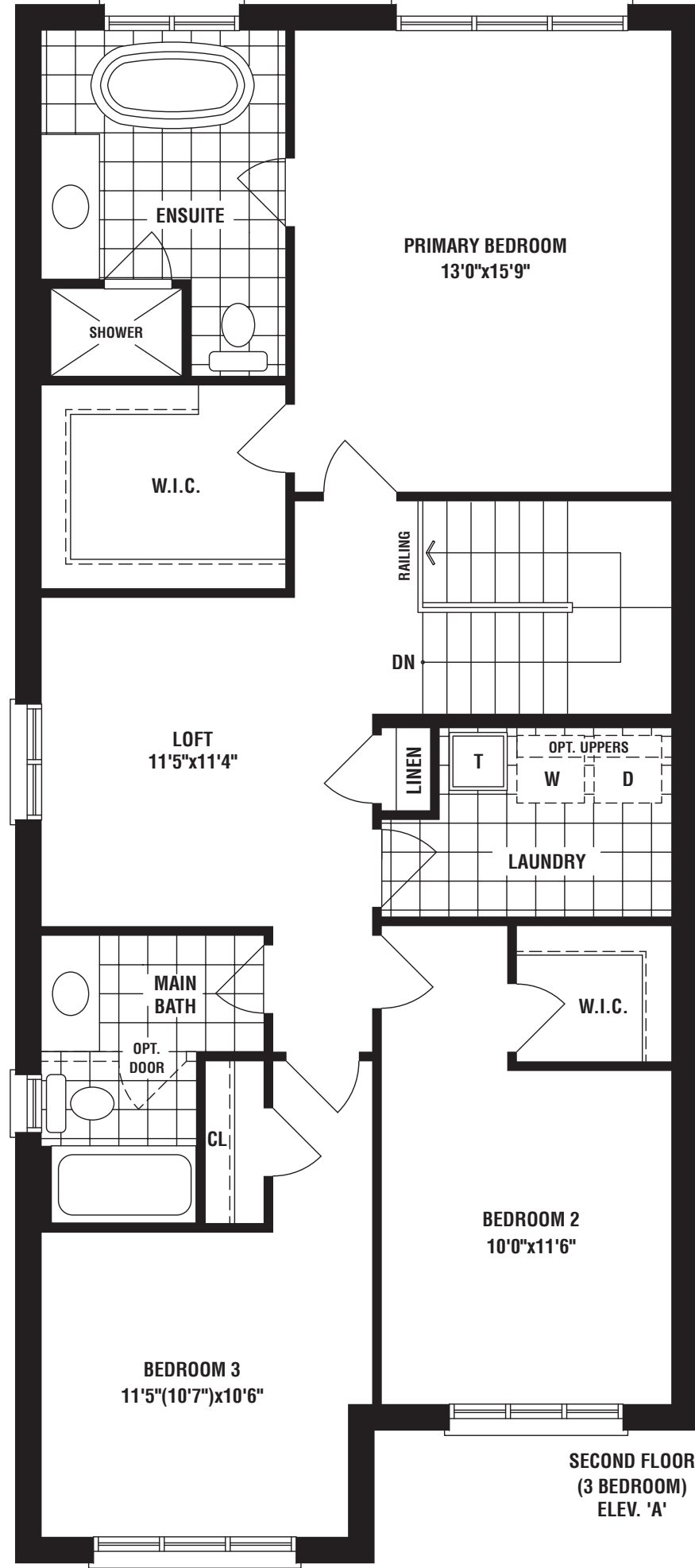
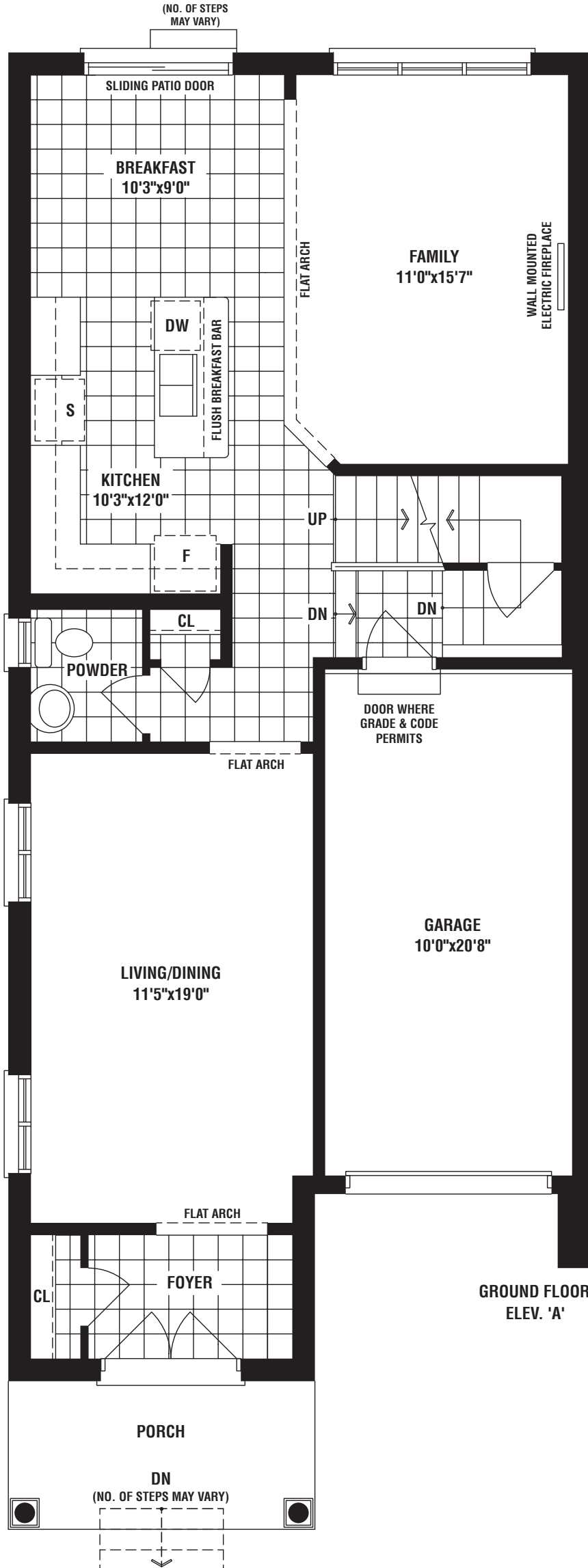


# birkdale

2173 SQ FT (ELEV A) | 2173 SQ FT (ELEV B) | 2173 SQ FT (ELEV C)



ELEVATION C





ELEVATION A



ELEVATION B

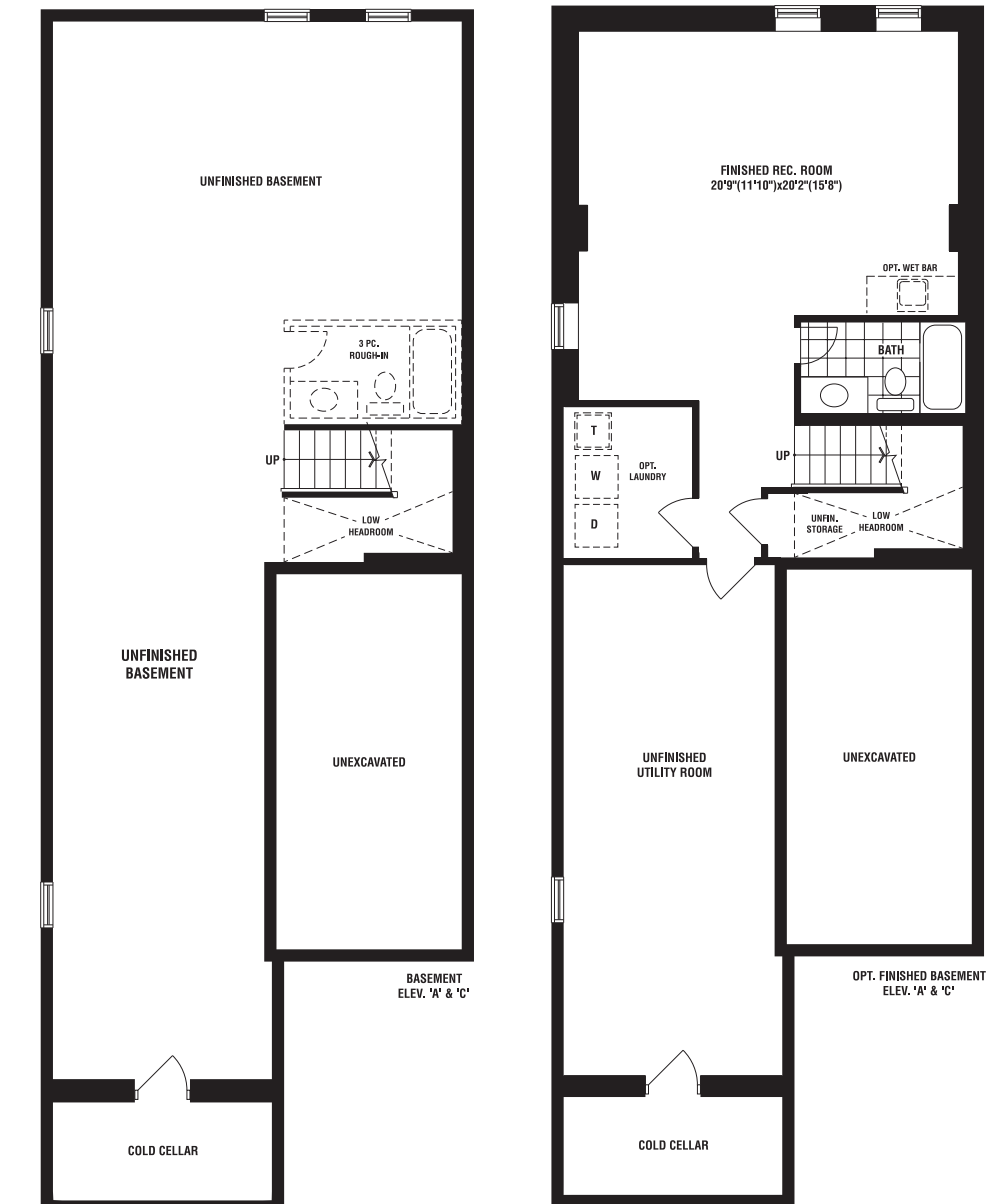
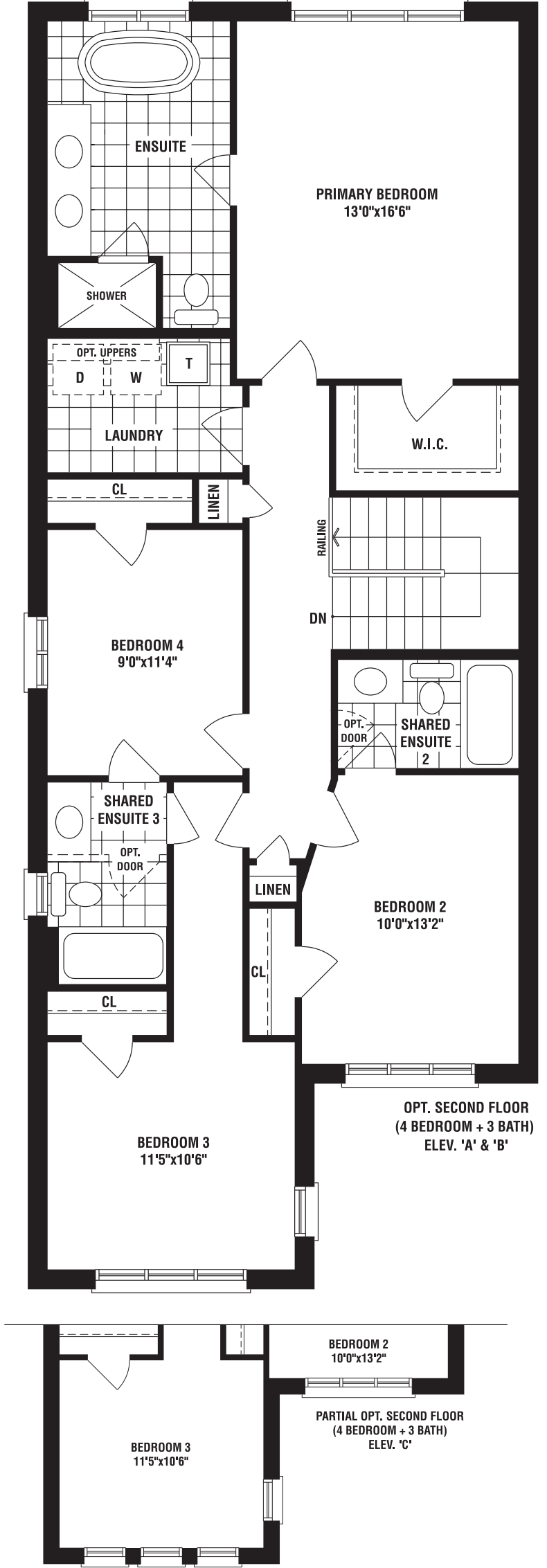
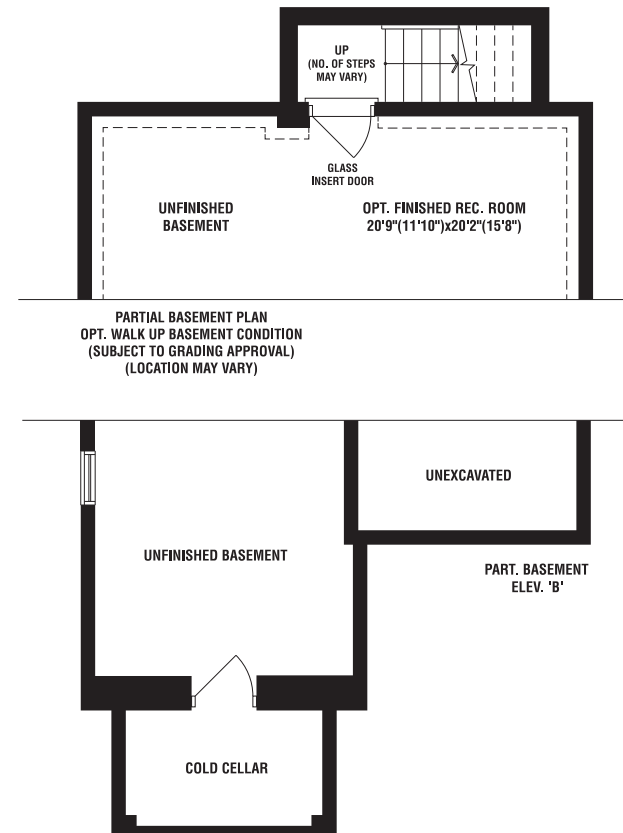
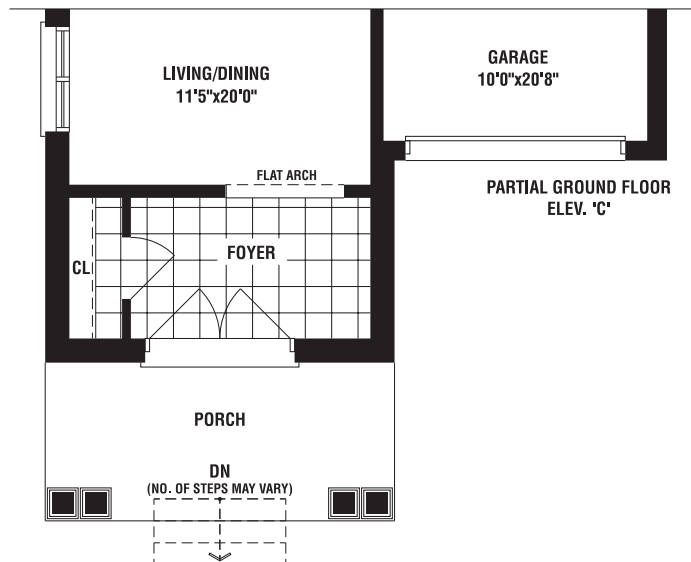
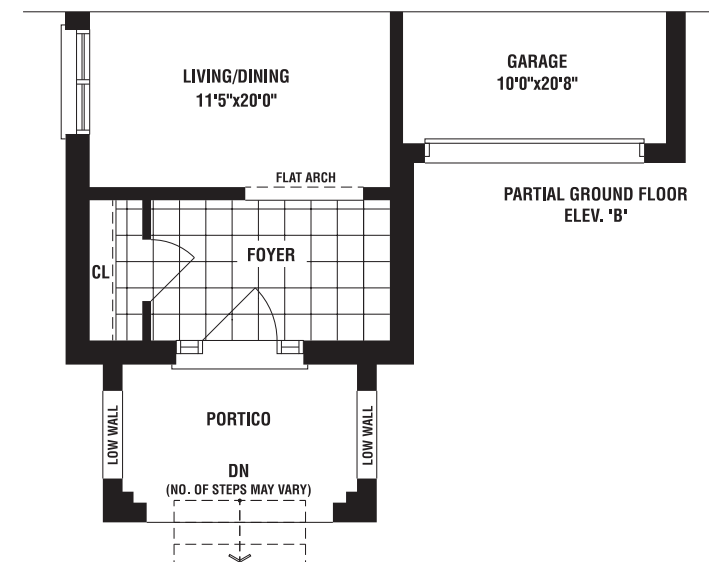
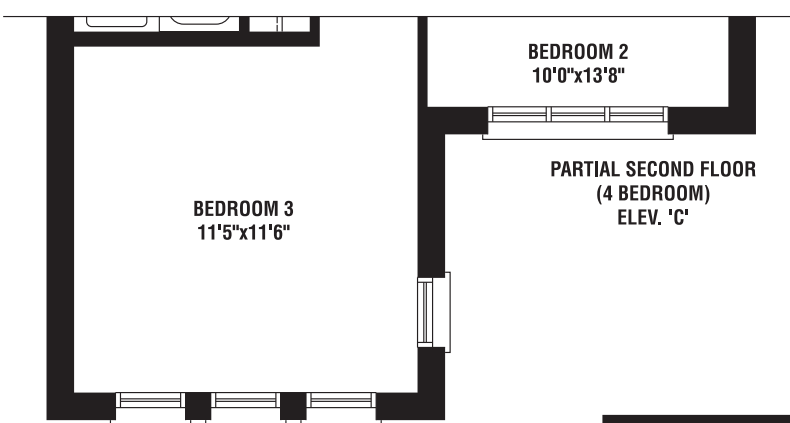
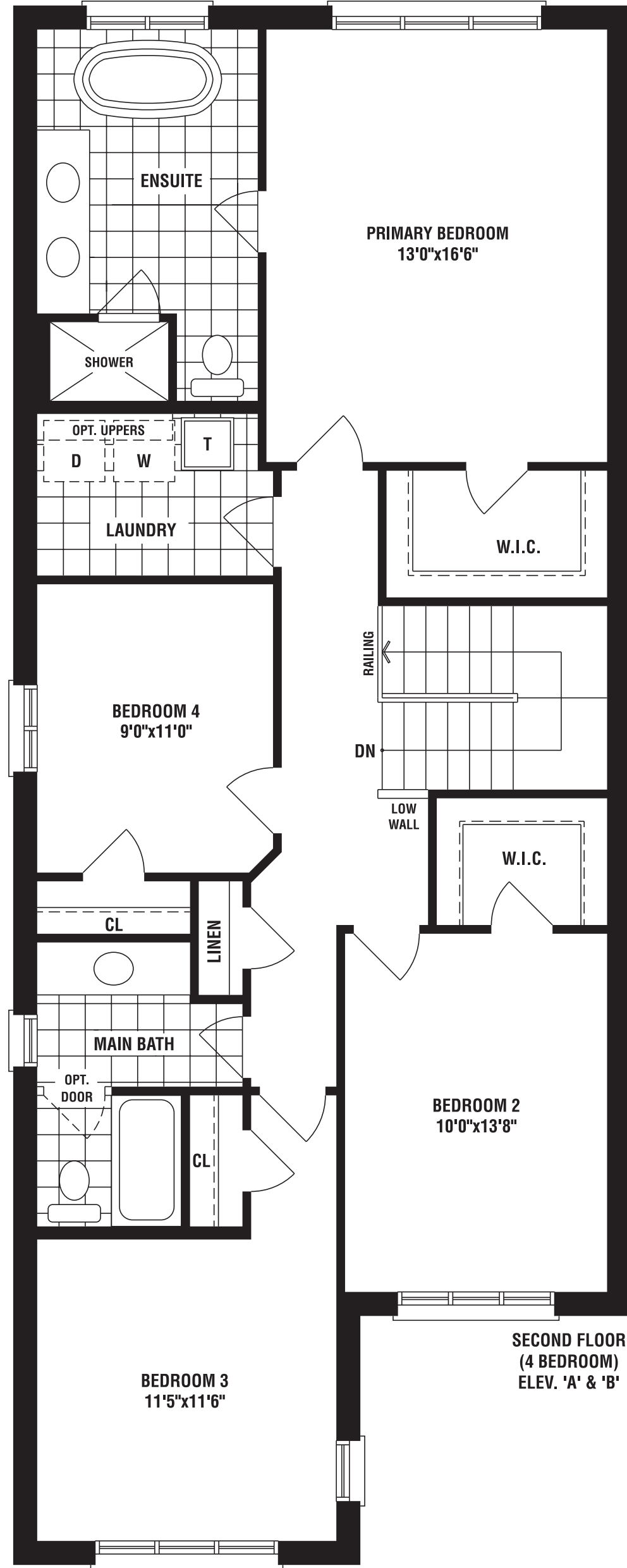
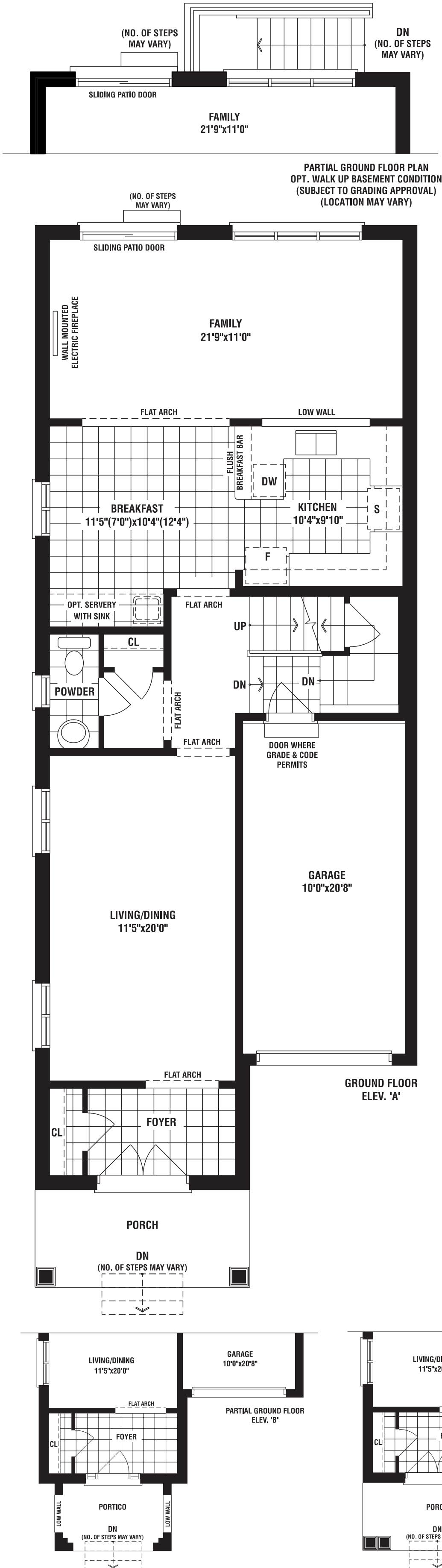


# newton

2400 SQ FT (ELEV A) | 2400 SQ FT (ELEV B) | 2400 SQ FT (ELEV C)



ELEVATION C



The floorplans and elevations shown, dimensions, specifications and architectural detailing are pre-construction plans and may be revised or improved as necessitated by architectural controls and the construction process. All dimensions are approximate. Actual usable floor space may vary from the stated area. House may be reversed and Purchaser agrees to accept same. Specifications subject to change without notice. Number of steps and location may vary at any exterior entrance. Illustrations are Artist's concept. Exterior railings on plans only as required by grade. E. & C.E. W/15/16\_04/24

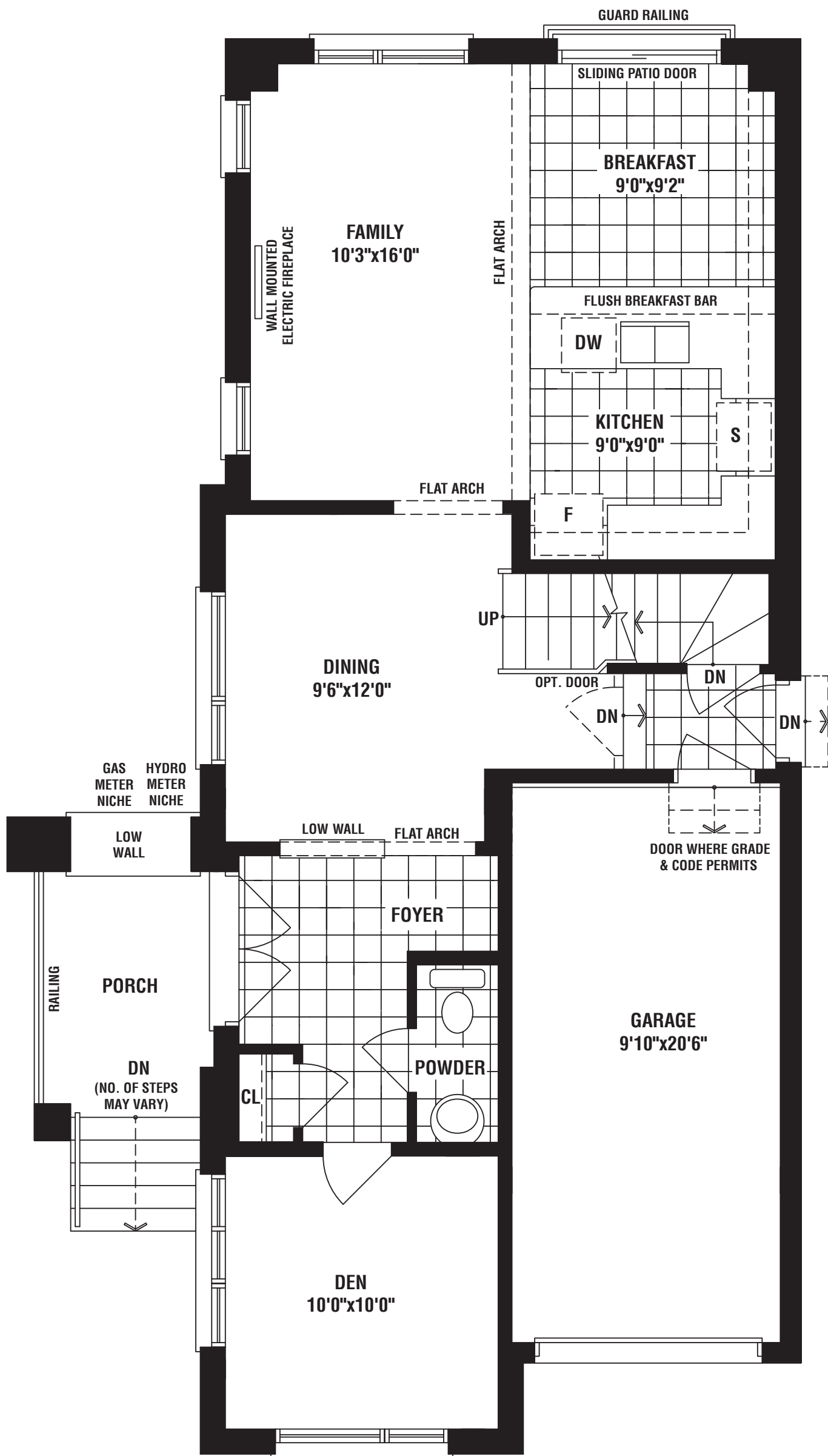


ELEVATION B

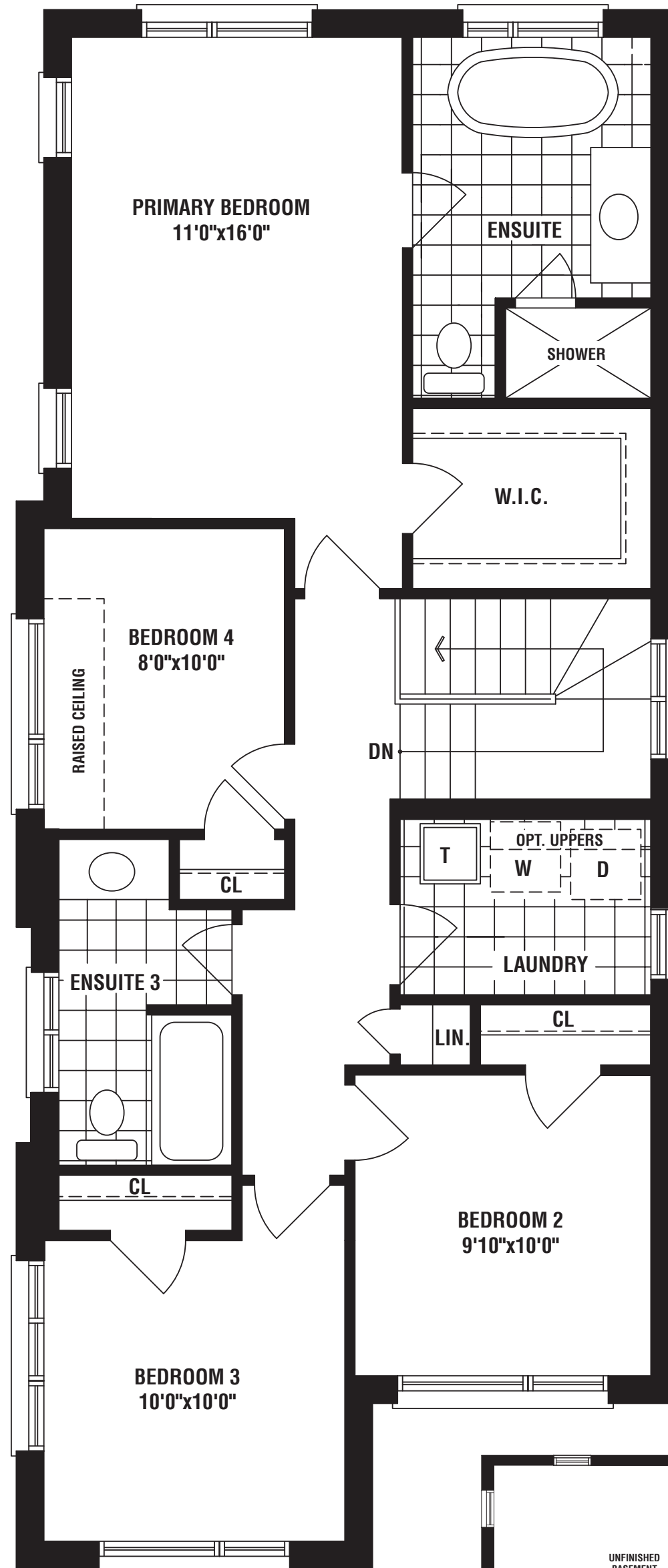


**woodland** LOT 36

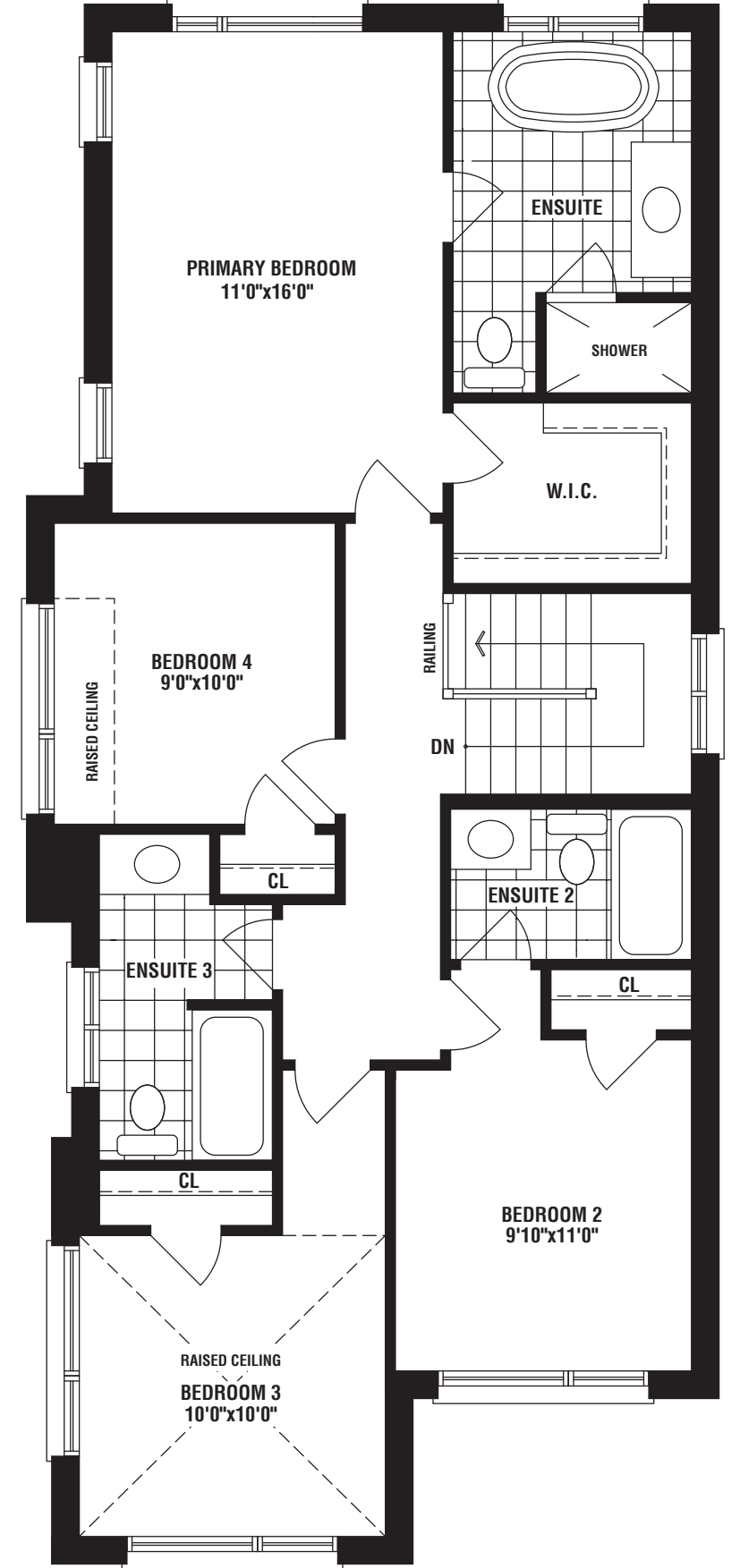
1929 SQ FT (ELEV B)



GROUND FLOOR PLAN  
ELEV. 'B'



SECOND FLOOR PLAN  
(4 BEDROOM)  
ELEV. 'B'



OPT. SECOND FLOOR  
(4 BEDROOM + 3 BATH)  
ELEV. 'B'

